



**BADAN
PANGAN
NASIONAL**

**NATIONAL
FOOD
AGENCY**

Pedoman Klasifikasi Pangan Segar



**Badan Pangan Nasional
2023**



**BADAN
PANGAN
NASIONAL**

**NATIONAL
FOOD
AGENCY**

Pedoman Klasifikasi Pangan Segar

**Badan Pangan Nasional
2023**



**SURAT
KEPUTUSAN**





**KEPALA BADAN PANGAN NASIONAL
REPUBLIK INDONESIA**

KEPUTUSAN KEPALA BADAN PANGAN NASIONAL REPUBLIK INDONESIA

NOMOR 337/PK.02.01/K/8/2023

TENTANG

PEDOMAN KLASIFIKASI PANGAN SEGAR

DENGAN RAHMAT TUHAN YANG MAHA ESA

KEPALA BADAN PANGAN NASIONAL REPUBLIK INDONESIA,

- Menimbang :
- a. bahwa berdasarkan Peraturan Presiden Nomor 66 Tahun 2021 tentang Badan Pangan Nasional, pengawasan penerapan standar keamanan pangan yang beredar merupakan salah satu fungsi Badan Pangan Nasional;
 - b. bahwa untuk mendukung pelaksanaan pengawasan keamanan dan mutu pangan segar, diperlukan klasifikasi pangan segar yang dikelompokkan berdasarkan asal dan karakteristik;
 - c. bahwa klasifikasi pangan segar sebagaimana dimaksud dalam huruf b, digunakan sebagai dasar penetapan standar dan/atau persyaratan keamanan, mutu, gizi, dan label pangan segar;
 - d. bahwa berdasarkan pertimbangan sebagaimana dimaksud dalam huruf a, huruf b, dan huruf c, perlu menetapkan Keputusan Kepala Badan Pangan Nasional tentang Pedoman Klasifikasi Pangan Segar;
- Mengingat :
1. Undang-Undang Nomor 18 Tahun 2012 tentang Pangan (Lembaran Negara Republik Indonesia Tahun 2012 Nomor 227, Tambahan Lembaran Negara Republik Indonesia Nomor 5360) sebagaimana telah beberapa kali diubah terakhir dengan Undang-Undang Nomor 6 Tahun 2023 tentang Penetapan Peraturan Pemerintah Pengganti Undang-Undang Nomor 2 Tahun 2022 tentang Cipta Kerja menjadi Undang-Undang (Lembaran Negara Republik Indonesia Tahun 2023 Nomor 41, Tambahan Lembaran Negara Republik Indonesia Nomor 6856);
 2. Peraturan Pemerintah Nomor 69 Tahun 1999 tentang Label dan Iklan Pangan (Lembaran Negara Republik Indonesia Tahun 1999 Nomor 131 Tambahan Lembaran Negara Republik Indonesia Nomor 3867);
 3. Peraturan Pemerintah Nomor 86 Tahun 2019 tentang Keamanan Pangan (Lembaran Negara Republik Indonesia Tahun 2019 Nomor 249, Tambahan Lembaran Negara Republik Indonesia Nomor 6442);

4. Peraturan Presiden Nomor 66 Tahun 2021 tentang Badan Pangan Nasional (Lembaran Negara Republik Indonesia Tahun 2021 Nomor 162);
5. Peraturan Badan Pangan Nasional Nomor 2 Tahun 2022 tentang Organisasi dan Tata Kerja Badan Pangan Nasional (Berita Negara Republik Indonesia Tahun 2022 Nomor 372);
6. Peraturan Badan Pangan Nasional Nomor 1 Tahun 2023 tentang Label Pangan Segar (Berita Negara Republik Indonesia Tahun 2023 Nomor 140);
7. Peraturan Badan Pangan Nasional Nomor 2 Tahun 2023 tentang Persyaratan Mutu dan Label Beras (Berita Negara Republik Indonesia Tahun 2023 Nomor 176);

MEMUTUSKAN :

- Menetapkan : KEPUTUSAN KEPALA BADAN PANGAN NASIONAL TENTANG PEDOMAN KLASIFIKASI PANGAN SEGAR.
- KESATU : Menetapkan Klasifikasi Pangan Segar sebagaimana tercantum dalam Lampiran I yang merupakan bagian tidak terpisahkan dari Keputusan ini.
- KEDUA : Pangan Segar sebagaimana dimaksud dalam Diktum KESATU berupa:
- a. Pangan segar yang belum mengalami pengolahan yang dapat dikonsumsi langsung atau tidak;
 - b. Pangan yang sudah mengalami pengolahan minimal meliputi pencucian, pengupasan, pendinginan, pembekuan, pemotongan, pengeringan, penggaraman, pencampuran, penggilingan, pencelupan (*blansir*), dan/atau pelapisan; atau
 - c. Pangan yang belum mengalami pengolahan dan/atau mengalami pengolahan minimal yang ditambahkan bahan tambahan pangan.
- KETIGA : Klasifikasi Pangan Segar sebagaimana dimaksud pada Diktum KESATU dikelompokkan berdasarkan asal dan karakteristiknya, berupa:
- a. Pangan segar asal tumbuhan, terdiri atas:
 - 1) sereal; dan
 - 2) umbi;
 - 3) kacang-kacangan, polong-polongan, biji-bijian dan biji/buah berminyak;
 - 4) sayur, termasuk jamur (*mushrooms*);
 - 5) buah;
 - 6) rempah; dan
 - 7) bahan penyegar dan pemanis.
 - b. Pangan segar asal hewan, terdiri atas:
 - 1) ikan dan produk perikanan (termasuk *krustase*, *moluska*, *kolenterata*, *ekinodermata*, mamalia air dan biota perairan lainnya);
 - 2) produk hewan mamalia;
 - 3) produk unggas;
 - 4) hewan invertebrata dan produknya; dan
 - 5) produk amfibi dan reptil.

- c. Alga dan mikroalga, terdiri dari:
- 1) alga; dan
 - 2) mikroalga.
- KEEMPAT : Dalam hal terdapat potensi irisan antara pangan segar dan pangan olahan, penentuan klasifikasi pangan menggunakan pohon keputusan sebagaimana tercantum dalam Lampiran II yang merupakan bagian tidak terpisahkan dari Keputusan ini.
- KELIMA : Klasifikasi pangan segar sebagaimana dimaksud dalam Diktum KETIGA digunakan sebagai dasar penetapan standar dan/atau persyaratan keamanan, mutu, gizi, dan label pangan.
- KEENAM : Dalam hal pangan segar menggunakan bahan tambahan pangan, sebagaimana dimaksud dalam Diktum KEDUA huruf c, pengelompokan pangan segar dilakukan sesuai dengan ketentuan peraturan perundang-undangan.
- KETUJUH : Keputusan ini mulai berlaku pada tanggal ditetapkan.

Ditetapkan di Jakarta
pada tanggal 7 Agustus 2023

KEPALA BADAN PANGAN NASIONAL
REPUBLIK INDONESIA,



ARIEK PRASETYO ADI

Salinan Keputusan ini disampaikan kepada Yth:

1. Menteri Dalam Negeri Republik Indonesia;
2. Menteri Perdagangan Republik Indonesia;
3. Menteri Pertanian Republik Indonesia;
4. Menteri Kelautan dan Perikanan Republik Indonesia;
5. Kepala Badan Pengawas Obat dan Makanan Republik Indonesia.



LAMPIRAN 1



PANGAN SEGAR ASAL TUMBUHAN



LAMPIRAN I
KEPUTUSAN KEPALA BADAN PANGAN NASIONAL
REPUBLIK INDONESIA
NOMOR 337/PK.02.01/K/8/2023
TENTANG
PEDOMAN KLASIFIKASI PANGAN SEGAR

Klasifikasi Pangan Segar

I. Pangan Segar Asal Tumbuhan

No	Kelompok	Sub Kelompok	Jenis Pangan	Sub Jenis Pangan / Varian	Nama Latin		
1	Serealia (Cereal Grains)	01. Serealia	1 Beras / Rice	Gabah / <i>Unhusked Rice</i>	<i>Oryza sativa</i>		
				Beras Pecah Kulit (Beras Coklat) / <i>Husked Rice</i>	<i>Oryza sativa</i>		
				Beras Sosoh / <i>Polished Rice</i>	<i>Oryza sativa</i>		
				Bekatul / <i>Rice Polish Powder</i>	<i>Oryza sativa</i>		
				Beras Merah / <i>Red Rice</i>	<i>Oryza punctata</i>		
				Beras Hitam / <i>Black Rice</i>	<i>Oryza sativa L. indica</i>		
				Beras Ketan Putih / <i>White Sticky Rice</i>	<i>Oryza sativa var. glutinosa</i>		
				Beras Ketan Hitam / <i>Black Sticky Rice</i>	<i>Oryza sativa var. glutinosa</i>		
				2	Jagung / <i>Maize / Corn</i>	Jagung (Tongkol, Pipil) / <i>Corn</i>	<i>Zea mays</i>
						Jagung Mutiara / <i>Flint Corn</i>	<i>Zea mays var. indurata</i>
						Jagung Manis / <i>Sweet Corn</i>	<i>Zea mays var. saccharata</i>
3	Gandum / <i>Wheat</i>	Jagung Berondong / <i>Pop Corn</i>	<i>Zea mays var. everta</i>				
		Jagung Tepung / <i>Floury Corn</i>	<i>Zea mays var. amylacea</i>				
		Jagung Ketan / <i>Waxy Corn</i>	<i>Zea mays var. ceratina</i>				
		Common Wheat	<i>Triticum aestivum</i>				
		Durum Wheat	<i>Triticum durum</i>				
Club Wheat	<i>Triticum compactum</i>						

No	Kelompok	Sub Kelompok	Jenis Pangan	Sub Jenis Pangan / Varian	Nama Latin
			4 Barley		<i>Hordeum vulgare</i>
			5 Millet	Common Millet/Proso Millet Jewawut/Hotong/Foxtail Millet Pearl Millet Little Millet Finger Millet Japanese Millet	<i>Panicum miliaceum</i> <i>Setaria italica</i> <i>Pennisetum glaucum</i> <i>Panicum sumatrense</i> <i>Eleusine coracana</i> subsp. <i>coracana</i> <i>Echinochloa frumentacea</i>
			6 Sorgum/Sorghum		<i>Sorghum bicolor</i>
			7 Oat	Biji Oat Groats	<i>Avena sativa</i>
			8 Rye		<i>Avena sativa</i>
			9 Triticale		<i>Secale cereale</i>
			10 Hanjeli/Jelai/Jali/Job's Tears		<i>Triticosecale</i>
			11 Fonio	Fonio Hitam/Black Fonio	<i>Cox lacryma-jobi</i> <i>Digitaria exilis</i>
			12 Teff		<i>Digitaria iburua</i>
			13 Quinoa		<i>Eragrostis tef</i>
			14 Soba/Buckwheat	Common Buckwheat Green Buckwheat	<i>Chenopodium quinoa</i> <i>Fagopyrum esculentum</i> <i>Fagopyrum tataricum</i>
2	Umби	01. Umби	1 Ubi Kayu/Cassava		<i>Manihot esculenta</i> Crantz
			2 Ubi Jalar/Sweet Potato		<i>Ipomoea batatas</i> L.
			3 Talas/Keladi/Bentul/Taro	Talas Bogor/Pontianak Talas Beneng Talas Belitung/Kimpul/Bentul Kimpul Hitam/Hideung	<i>Colocasia esculenta</i> L. <i>Colocasia esculenta</i> L. <i>Xanthosoma undipes</i> K. Koch <i>Xanthosoma sagittifolium</i> <i>Xanthosoma Nigrum</i>
			4 Uwi/Gadung/Gembili/Yam	Uwi/Purple Yam/Ube Gembili/Lesser Yam Gadung/Intoxicating Yam/Asiatic Bitter Yam Guinea Yam Yellow Guinea Yam	<i>Dioscorea spp.</i> <i>Dioscorea alata</i> <i>Dioscorea esculenta</i> <i>Dioscorea hispida</i> Dennst. <i>Dioscorea rotundata</i> <i>Dioscorea cayenensis</i>

No	Kelompok	Sub Kelompok	Jenis Pangan	Sub Jenis Pangan / Varian	Nama Latin
				<p>Chinese Yam</p> <p>Gembolo/ Air-Potato Yam</p> <p>Uwi Katak/ Five Leaf Yam/ Mountain Yam</p>	<p><i>Dioscorea polystachya</i></p> <p><i>Dioscorea bulbifera</i></p> <p><i>Dioscorea pentaphylla</i></p>
3	Kacang-Kacangan, Polong-Polongan, Biji-Bijian, dan Biji/Buah Berminyak	01. Kacang-Kacangan	5	Garut/Arrowroot	<i>Maranta arundinacea</i>
			6	Ganyong/Achira/Indian Shot	<i>Canna edulis Ker-Gawl</i>
			7	Suweg/ Elephant Foot Yam	<i>Amorphophallus paeonifolius</i>
			8	Porang/ Iles-Iles	<i>Amorphophallus campanulatus</i>
			9	Wahur/ Acung/ Voodoo Lily	<i>Amorphophallus muelleri</i>
			10	Sagu/ Sago	<i>Amorphophallus variabilis</i>
			1	Kacang Mete/ Mede/ Cashew Nuts	<i>Metroxylon sagu</i> Rottb.
			2	Kacang Brasil/ Brazil Nuts	<i>Anacardium occidentale</i>
			3	Kastanye/ Chestnuts	<i>Bertholletia excelsa</i>
			4	Kacang Almond/ Almond	<i>Castanea</i>
		5	Kacang Kenari/ Almond Jawa	<i>Prunus dulcis, Amygdalus communis</i> L.	
		6	Walnut	<i>Canarium indicum</i> L.	
		7	Macadamia	<i>Juglans regia</i>	
		8	Pistachio	<i>Macadamia tetraphylla</i>	
		9	Hazelnut	<i>Pistacia vera</i> L.	
		10	Pecan	<i>Corylus avellana</i>	
				<i>Carya illinoensis</i>	
02. Polong-Polongan		1	Kacang Tanah/ Peanut	<i>Arachis hypogaea</i> L.	
2		2	Kedelai/ Soybean	<i>Glycine max</i> L.	
			Kedelai Hitam/ Black Soybean	<i>Glycine max</i> L. Merril	
			Edamame/ Green Soybean	<i>Glycine max</i> L. Merr	
3		3	Kacang Hijau/ Mung Bean/ Green Gram	<i>Vigna radiata</i>	
4		4	Kacang Bogor/ Bambara/ Earth Pea	<i>Vigna subterranea</i> L.	
5		5	Kacang Tunggak/ Kacang Tolo/ Kacang Otok/ Cow Pea	<i>Vigna unguiculata</i>	
6		6	Kacang Azuki/ Adzuki Bean	<i>Vigna angularis</i>	
7		7	Moth Bean	<i>Vigna aconitifolia</i>	

No	Kelompok	Sub Kelompok	Jenis Pangan	Sub Jenis Pangan / Varian	Nama Latin
8			Tantangun/Nasi/ Uci/ Rice Bean.		<i>Vigna umbellata</i> (Thunb.) Ohwi & H.Ohashi
9			Kacang Merah/ Kidney Bean	Kacang Merah/ Kidney Bean Black Bean Navy Bean	<i>Phaseolus vulgaris</i> L.
10			Scarlet Runner Bean		<i>Phaseolus vulgaris</i> L.
11			Kacang Kratok/ Lima Bean		<i>Phaseolus coccineus</i>
12			Flageolet		<i>Phaseolus lunatus</i>
13			Kacang Kayu/ Gude/ Hiris/ Bali/ Pigeon Pea		<i>Phaseolus vulgaris</i> (Flageolet Group)
14			Kacang Arab / Chick Pea		<i>Cajanus cajan</i> L.
15			Broad Bean/ Faba Bean/ Fava Bean		<i>Cicer arretinum</i>
16			Kacang Kapri/ Ercis/ Garden Pea		<i>Vicia faba</i>
17			Kacang Koro Parang/ Jack Bean		<i>Pisum sativum</i>
18			Kacang Koro Pedang/ Sword Bean		<i>Canavalia ensiformis</i>
19			Kacang Koro Benguk/ Velvet Bean		<i>Canavalia gladiata</i>
20			Cluster Bean/ Guar		<i>Mucuna pruriens</i>
21			Lupin/ Big-Leaf Lupin		<i>Cyamopsis tetragonoloba</i> L.
22			Lentil		<i>Lupinus polyphyllus</i>
23			Kacang Asparagus/ Kacang Bersayap/ Asparagus Pea/ Yardlong Beans		<i>Lens culinaris</i>
24			Kacang Biduk/ Komak/ Lablab/ Hyacinth Bean		<i>Tetragonolobus purpurea, Vigna unguiculata</i> ssp. <i>sesquipedalis</i>
1			Biji Kelor/ Moringa Seed		<i>Lablab purpureus</i>
2			Biji Niger/ Niger Seed		<i>Moringa oleifera</i>
3			Selasih/ Basil Seed		<i>Guizotia abyssinica</i>
4			Biji Chia / Chia Seed		<i>Ocimum basilicum</i>
5			Biji Waluh/ Pumpkin Seed		<i>Sabia hispanica</i>
6			Biji Semangka/ Water Melon Seed		<i>Cucurbita pepo</i>
7			Pine Nut		<i>Citrullus vulgaris</i> L.
8			Hemp Seed		Pinaceae
9			Poppy Seed		<i>Cannabis sativa</i>
					<i>Papaver somniferum</i>

03. Biji-Bijian

No	Kelompok	Sub Kelompok	Jenis Pangan	Sub Jenis Pangan / Varian	Nama Latin	
		04. Biji/Buah Berminyak	1	Zaitun / Olive		<i>Olea europaea</i> L.
			2	Kelapa/ Coconut		<i>Cocos nucifera</i> L.
			3	Kelapa Sawit/ Oil Palm.		<i>Elaeis guineensis</i>
			4	Biji Kapas/ Cotton Seed		<i>Gossypium hirsutum</i> L.
			5	Biji Kapuk/ Kapok Seed/ Silk Cotton Seed		<i>Ceiba pentandra</i>
			6	Rapeseed/ Canola/ Colza		<i>Brassica napus</i> L.
			7	Mustard Seed		<i>Brassica juncea</i> L.
			8	Biji Safflower/ Safflower Seed		<i>Carthamus tinctorius</i> L.
			9	Wijen/ Sesame Seed		<i>Sesamum indicum</i>
			10	Biji Rami/ Flaxseed		<i>Linum usitatissimum</i>
			11	Biji Bunga Matahari/ Sunflower Seed		<i>Helianthus annuus</i>
			12	Shea Nut		<i>Vitellaria paradoxa</i>
4	Sayur, Termasuk Jamur (Mushrooms)	01. Kubis-Kubisan/ Brassica	1	Brokoli/ Broccoli		<i>Brassica oleracea</i> var. <i>italica</i>
			2	Kailan/ Chinese Broccoli	Broccolini, Broccoflower	<i>Brassica oleracea</i> var. <i>italica</i> x <i>alboglabra</i>
			3	Brussels Sprouts		<i>Brassica oleracea</i> var. <i>gemmifera</i>
			4	Kubis/ Cabbage	CannonBall Cabbage/ Green Cabbage	<i>Brassica oleracea</i> L.
					Red/ Purple Cabbage	<i>Brassica oleracea</i> var. <i>capitata</i> f. <i>rubra</i>
					White Cabbage	<i>Brassica oleracea</i> var. <i>capitata</i> f. <i>alba</i>
					Pointed/ Oxheart Cabbage	<i>Brassica oleracea</i>
					Savoy Cabbage	<i>Brassica oleracea</i> var. <i>sabauda</i>
			5	Collard Greens		<i>Brassica oleracea</i> var. <i>virididis</i>
			6	Kembang Kol/ Cauliflower		<i>Brassica oleracea</i> var. <i>botrytis</i>
			7	Kale	Romanesco Broccoli	<i>Brassica oleracea</i> var. <i>botrytis</i>
					Marrou-Stem Kale	<i>Brassica oleracea</i> var. <i>acephala</i>
		Siberian Kale	<i>Brassica napus</i> var. <i>pabularia</i>			
8	Kohlrabi		<i>Brassica oleracea</i> var. <i>gongylodes</i>			

No	Kelompok	Sub Kelompok	Jenis Pangan	Sub Jenis Pangan / Varian	Nama Latin
		02. Umbi Lapis	1 Bawang Putih/ <i>Garlic</i>	Bawang Putih, Berkepala Besar	<i>Allium sativum</i> L.
			2 Bawang Bombay/ <i>Onion</i>		<i>Allium ampeloprasum</i> var. <i>holimense</i> (Mill) Asch. et Graebn.
			3 Bawang Merah/ <i>Shallot</i>		<i>Allium cepa</i> L
			4 Bawang Cina/ <i>Rakkyo</i>		<i>Allium ascalonicum</i> , <i>Allium cepa</i> var. <i>aggregatum</i> , <i>Allium oschaninii</i>
			5 Bawang Batak/ <i>Lokio</i>		<i>Allium chinense</i>
			6 Bawang Mesir/ <i>Bawang Pohon/Egyptian Walking Onions</i>		<i>Allium schoenoprasum</i> , <i>Allium chinense</i> G.Don <i>Allium x proliferum</i>
		03. Sayuran Buah	1 Mentimun/ <i>Cucumber</i>		<i>Cucumis sativus</i>
			2 <i>Courgette/Zucchini</i>	Mentimun Jepang/ <i>Kyuri</i>	<i>Cucumis sativus</i>
			3 Waluh/Labu Kuning/Labu Parang/ <i>Pumpkin</i>	Mentimun Acar/ <i>Gherkin</i>	<i>Cucumis anguria</i> <i>Cucurbita pepo</i> <i>Cucurbita maxima</i>
			4 Labu Putih/Labu Air/Labu Sayur/ <i>Gourds/Calabash/Bottle Gourd</i>	<i>Butternut Squash</i> <i>Cushaw Squash</i>	<i>Cucurbita moschata</i> <i>Cucurbita argyrosperma</i> <i>Lagenaria siceraria</i>
			5 Pare/ <i>Bittermelon</i>		<i>Momordica charantia</i>
			6 Pare Belut/ <i>Snake Gourd</i>		<i>Trichosanthes cucumerina</i>
			7 Labu Siam/ <i>Chayote</i>		<i>Sechium edule</i>
			8 <i>Winter Melon/Wax Gourd/Ash Gourd</i>		<i>Benincasa hispida</i>
			9 Gambas/ <i>Oyong/Chinese Okra/Sponge Gourd</i>		<i>Luffa acutangula</i>
			10 Blustru/ <i>Belustru/Petola/Ketola/Sponge Gourd</i>		<i>Luffa aegyptiaca</i>
			11 <i>Okra/Lady Finger</i>		<i>Abelmoschus esculentus</i>
			12 <i>Terung/Eggplant/Aubergine</i>	Terung Ungu Terung Hijau Terung Bulat	<i>Solanum melongena</i> <i>Solanum melongena</i> <i>Solanum melongena</i>

No	Kelompok	Sub Kelompok	Jenis Pangan	Sub Jenis Pangan / Varian	Nama Latin
13			Takokak/Terung Pipit / Turkey Berry/ Mini Eggplant		<i>Solanum torvum</i>
14			Leunca/Ranti/Bobosa/Black Nightshade		<i>Solanum nigrum</i> L.
15			Tomat/Tomato	Tomat Ceri/Cherry Tomato	<i>Solanum lycopersicum</i> <i>Solanum lycopersicum</i> var. <i>cerasiforme</i>
16			Paprika/Bell Pepper		<i>Capsicum annuum</i>
17			Nangka Muda/ Young Jackfruit		<i>Artocarpus heterophyllus</i>
18			Kluwih/Breadnut / Seeded Breadfruit		<i>Artocarpus camansi</i>
19			Jagung Muda/Putren /Baby Corn		<i>Zea mays</i> L
20			Buah Kelor/Klentang /Horse-radish Fruit/Drumstick Fruit		<i>Moringa oleifera</i>
21			Jengkoi/Jering/ Blackbead/ Dog Fruit		<i>Archidendron pauciflorum</i>
22			Petai/Bitter Bean		<i>Parkia speciosa</i>
23			Buncis/Beans		<i>Phaseolus vulgaris</i>
24			Kacang Panjang/Long Bean		<i>Vigna unguiculata</i> subsp. <i>sesquipedalis</i>
25			Kecipir/ Winged Bean		<i>Psophocarpus tetragonolobus</i>
26			Petai Cina/Lamtoro /River Tamarind		<i>Leucaena leucocephala</i>
27			Pepaya Muda/ Young Papaya		<i>Carica papaya</i>
1			Bayam / Spinach	Bayam Hijau Bayam Merah Bayam Gajah Bayam Jepang/Horenso	<i>Amaranthus</i> sp <i>Amaranthus hybridus</i> <i>Amaranthus gangeticus</i> <i>Amaranthus tricolor</i> <i>Spinacia Oleracea</i> <i>Ipomoea aquatica</i>
2			Kangkung/ Water Spinach		<i>Brassica rapa</i> var. <i>pervinidis</i>
3			Bayam Komatsuna/ Komatsuna/ Japanese Mustard Spinach		<i>Brassica chinensis</i> var. <i>parachinensis</i>
4			Caisim/Sawi Hijau/Choi Stum/ Choy Sum/ Tsai Shim		

No	Kelompok	Sub Kelompok	Jenis Pangan	Sub Jenis Pangan / Varian	Nama Latin
5			Sawi Pahit / Kai Choy / Chinese Mustard		<i>Brassica juncea</i> L.
6			Sawi Putih / Napa Cabbage / Chinese Cabbage / Pestsai		<i>Brassica rapa</i> subsp. <i>pekinensis</i>
7			Pak Choi / Bok Choy	Shanghai Bok Choy Dwarf Bok Choy	<i>Brassica rapa</i> subsp. <i>chinensis</i>
8			Sawi Pagoda / Asian Greens / Tat Choy		<i>Brassica rapa</i> subsp. <i>chinensis</i>
9			Mizuna		<i>Brassica rapa</i> subsp. <i>niposinica</i>
10			Mibuna		<i>Brassica rapa</i> var. <i>japonica</i>
11			Rapini / Broccoli rabe		<i>Brassica rapa</i> subsp. <i>parachinensis</i>
12			Mustard Greens		<i>Brassica juncea</i> var. <i>rugosa</i> , <i>Brassica juncea</i> var. <i>integrifolia</i>
13			Selada / Lettuce		<i>Lactuca sativa</i>
				Celtuce / Aa Choy / Aa Cai	<i>Lactuca sativa</i> var. <i>angustana</i>
				Iceberg / Crisphead Lettuce	<i>Lactuca sativa</i> var. <i>capitata</i>
				Butterhead Lettuce	<i>Lactuca sativa</i> var. <i>capitata</i>
				Curled Lettuce	<i>Lactuca sativa</i> var. <i>crispata</i>
				Romaine Lettuce	<i>Lactuca sativa</i> var. <i>longifolia</i>
				Batavia Lettuce	<i>Lactuca sativa</i> var. <i>longifolia</i>
				Oak Leaf Lettuce	<i>Lactuca sativa</i> 'Red Oak Leaf'
				Little Gem Lettuce	<i>Lactuca sativa</i> 'Red Little Gem'
				Bibb Lettuce	<i>Lactuca sativa</i>
				Boston Lettuce	<i>Lactuca sativa</i>
				Loose-Leaf Lettuce	<i>Lactuca sativa</i>
14			Selada Air / Water Cress		<i>Lactuca sativa</i>
15			Chicory / Radicchio		<i>Nasturtium officinale</i>
					<i>Cichorium intybus</i>
				Radicchio Rosso	<i>Cichorium intybus</i> var. <i>foliosum</i>
				Belgian Endive / Witloof	<i>Cichorium intybus</i> var. <i>foliosum</i>
				Industrial Chicory	<i>Cichorium intybus</i> var. <i>scaberrimum</i>
16			Endive		<i>Cichorium endivia</i>
				Frisee Lettuce / Curly Endive	<i>Cichorium endivia</i> var. <i>crispum</i>
				Batavian Endive / Escarole	<i>Cichorium endivia</i> 'latifolium'

No	Kelompok	Sub Kelompok	Jenis Pangan	Sub Jenis Pangan / Varian	Nama Latin
17			<i>Mache/ Corn Salad/ Lamb's Lettuce</i>		<i>Valerianella locusta</i>
18			<i>Arugula/ Rocket</i>		<i>Eruca vesicaria</i>
19			<i>Bawang Daun/ Spring Onion/ Scallion</i>		<i>Allium fistulosum</i>
20			<i>Leek</i>		<i>Allium porrum</i>
21			<i>Kucal/ Chives</i>		<i>Allium schoenoprasum</i>
22			<i>Daun Ubi Kayu/ Cassava Leaf</i>		<i>Manihot esculenta Crantz</i>
23			<i>Daun Ubi Jalar/ Sweet Potato Leaf</i>		<i>Ipomoea batatas</i>
24			<i>Daun Pepaya/ Papaya Leaf</i>		<i>Carica papaya</i>
25			<i>Daun Kelor/ Horse-radish Leaf/ Drumstick Leaf</i>		<i>Moringa oleifera</i>
26			<i>Daun Katuk/ Sweet Leaf</i>		<i>Sauropus androgynus</i>
27			<i>Daun Talas/ Taro Leaf</i>		<i>Colocasia</i>
28			<i>Daun Labu/ Chayote Leaf</i>		<i>Sechium edule</i>
29			<i>Daun Kacang Panjang/ Lembayung/ Yardlong Beans Leaf</i>		<i>Vigna unguiculata ssp. sesquipedalis</i>
30			<i>Daun Kemkir/ King's Salad</i>		<i>Cosmos caudatus</i>
31			<i>Daun Anggur/ Grape Leaves</i>	<i>Daun Anggur</i>	<i>Vitis vinifera</i>
32			<i>Pea Leaf/ Dôu Mido</i>		<i>Pisum sativum var. saccharatum</i> Set.
33			<i>Chard/ Swiss Chard</i>		<i>Beta vulgaris</i>
34			<i>Genjer/ Yellow Velvetleaf</i>		<i>Limnorcharis flava</i>
35			<i>Daun Melinjo/ Spanish Joint Fir Leaf</i>		<i>Gnetum gnemon L.</i>
36			<i>Poh-Pohan/ Melastome Clearweed</i>		<i>Pilea melastomoides</i>
37			<i>Kemangi/ Basil</i>		<i>Ocimum basilicum var. anisatum</i> Benth.
38			<i>Pakis/ Fiddlehead Fern</i>		<i>Diplazium esculentum</i>
39			<i>Semanggi/ Clover</i>		<i>Marsilea crenata PresL</i>
40			<i>Daun Ginseng/ Fameflower</i>		<i>Talinum paniculatum</i>
41			<i>Pegagan/ Spadeleaf/ Indian Pennywort</i>		<i>Centella asiatica</i>
42			<i>Bunut/ Banyan</i>		<i>Ficus glauca</i>
43			<i>Beluntas/ Indian Camphorweed</i>		<i>Pluchea indica</i>
44			<i>Daun Jambu Mede/ Cashew Leaf</i>		<i>Anacardium occidentale</i>

No	Kelompok	Sub Kelompok	Jenis Pangan	Sub Jenis Pangan / Varian	Nama Latin
		05. Sayuran Umbi dan Akar	1 Wortel/ Carrot 2 Lobak/ Daikon 3 Radish 4 Celeriac 5 Bit/ Beetroot 6 Fennel 7 Burdock 8 Lotus Root 9 Salsify 10 Arrowhead 11 Horseradish 12 Chinese Artichoke/ Japanese Artichoke/ Knotroot 13 Jerusalem Artichoke/ Sunroot 14 Rutabaga/ Russian Turnip 15 Turnip 16 Wasabi/ Japanese Horseradish 17 Kentang/ Potato		<i>Daucus carota</i> <i>Raphanus sativus</i> var. <i>longipinnatus</i> <i>Raphanus sativus</i> <i>Apium graveolens</i> var. <i>rapaceum</i> <i>Beta vulgaris</i> <i>Foeniculum vulgare</i> <i>Arctium lapp</i> <i>Nelumbo nucifera</i> <i>Tragopogon porrifolius</i> <i>Sagittaria sagittifolia</i> <i>Armoracia rusticana</i> <i>Stachys affinis</i> <i>Helianthus tuberosus</i> <i>Brassica napus</i> var. <i>napobrassica</i> <i>Brassica rapa</i> subsp. <i>rapa</i> <i>Wasabia japonica</i> <i>Solanum tuberosum</i>
		06. Sayuran Batang/ Tangkai	1 Asparagus 2 Seledri Batang/ Celery 3 Rhubarb 4 Palm Hearts 5 Rebung/ Bamboo Shoot		<i>Asparagus officinalis</i> <i>Apium graveolens</i> <i>Rheum rhabarbarum</i> <i>Bactris gasipaes</i> <i>Bambusa vulgaris</i> , <i>Phyllostachys edulis</i>
		07. Sayuran Bunga	1 Artichoke 2 Kecambah/ Honje/ Torch Ginger 3 Bunga Turi/ Vegetable Hummingbird 4 Bunga Pepaya/ Papaya Flower 5 Jantung Pisang/ Banana Blossom 6 Sedap Malam/ Tuberose Flower 7 Bunga Bawang/ Bunga Prei/ Scallion Blossoms		<i>Cynara cardunculus</i> var. <i>scolymus</i> <i>Etilingera elatior</i> <i>Sesbania grandiflora</i> <i>Carica papaya</i> <i>Musa spp.</i> <i>Polygonum tuberosum</i> <i>Allium sp.</i>

No	Kelompok	Sub Kelompok	Jenis Pangan	Sub Jenis Pangan / Varian	Nama Latin	
		08. Sayuran Lain	1	Tauge/Kecambah Kacang Hijau/ Sprouts	<i>Vigna spp.</i>	
			2	<i>Alfafa</i>	<i>Medicago sativa</i>	
			3	<i>Cllover Sprout</i>	<i>Trifolium pratense</i>	
			4	Jamur Kancing/ <i>Button Mushroom/ Champignon</i>	Jamur <i>Portobello/Portobello</i> <i>Cremini Mushroom</i>	<i>Agaricus bisporus</i> <i>Agaricus bisporus</i>
			5	Jamur Tiram/ <i>Oyster Mushroom</i>		<i>Pleurotus ostreatus</i>
			6	Jamur Kuping/ <i>Wood Ear Mushroom</i>		<i>Auricularia auricularia-judae</i>
			7	Jamur Merang/ <i>Paddy Straw Mushroom/ Straw Mushroom</i>		<i>Volvariella volvacea</i>
			8	Jamur Shiitake/ <i>Shiitake</i>		<i>Lentinus edodes</i>
			9	Jamur Enoki/ <i>Enoki</i>		<i>Flammulina filiformis</i>
			10	Jamur Shimeji/ <i>Shimeji</i>		<i>Hypsizygus tessulatus</i>
			11	<i>Truffle</i>		<i>Tuber melanosporum</i> <i>Tuber magnatum</i> <i>Tuber aestivum</i>
			12	<i>Porcini Mushroom</i>		<i>Boletus edulis</i>
			13	<i>Chanterelle/ Girolele Mushroom</i>		<i>Chanterellus</i>
			14	<i>Morel Mushroom</i>		<i>Morchella esculenta</i>
			15	<i>Maitake Mushroom</i>		<i>Grifola frondosa</i>
			16	<i>Hedgehog Mushroom</i>		<i>Hydnum repandum</i>
			17	<i>Matsutake Mushroom</i>		<i>Tricholoma matsutake</i>
5	Buah	01. Buah Dengan Kulit Yang Tidak Dapat Dimakan	1	Buah Nona/ <i>Custard Apple</i>	<i>Annona reticulata</i>	
			2	Srikaya/ <i>Sweetsop/ Sugar Apple</i>	<i>Annona squamosa</i>	
			3	Sirsak/ <i>Soursop</i>	<i>Annona muricata</i>	
			4	<i>Cherimoya</i>	<i>Annona cherimola</i>	
			5	Kesumba Keling/ <i>Annatto/ Achiotte</i>	<i>Bixa orellana</i>	
			6	<i>Akee/ Ankye/ Achee/ Akee/ Akee Apple/ Ajeje</i>	<i>Blighia sapida</i>	
			7	Alpukat/ <i>Avocado</i>	<i>Persea americana</i> <i>Persea drymifolia</i> <i>Persea guatemalensis</i> <i>Persea americana</i>	

No	Kelompok	Sub Kelompok	Jenis Pangan	Sub Jenis Pangan / Varian	Nama Latin
8			Pisang/ <i>Banana</i>	Semua Jenis Pisang Buah	<i>Musa spp.</i>
9			Sukun/ <i>Breadfruit</i>	Sawo Manila	<i>Artocarpus altilis</i>
10			Sawo/ <i>Sapodilla</i>	Sawo Kecil	<i>Manilkara zapota</i>
				Sawo Mentega	<i>Manilkara kaoko</i>
				Sawo Duren	<i>Pouteria campechiana</i>
				Sawo <i>Mamey Sapote</i>	<i>Chrysophyllum cainito</i>
				Sawo Hijau	<i>Pouteria sapota</i>
				Sawo Putih	<i>Pouteria viridis</i>
				Sawo Hitam	<i>Casimiroa edulis</i>
11			Durian	Durian Biasa	<i>Diospyros nigra</i>
				Durian Lai	<i>Durio zibethinus</i> (Murr)
				Durian Kerantongan	<i>Durio kutejensis</i> (Hass) Bece
				Durian Tabelek	<i>Durio oxleyanmis</i> (Griff)
				Durian Lahong	<i>Durio graveolens</i> (Bece)
				Durian Munjit	<i>Durio delcis</i>
				Durian Daun	<i>Durio granatiflorus</i> (Mast)
				Durian Kura-Kura	<i>Durio lowianus</i>
12			Nangka/ <i>Jackfruit</i>	Nangka	<i>Durio testudinatum</i>
13			Cempedak/ <i>Champedak</i>		<i>Artocarpus heterophyllus</i> Lamk, <i>Artocarpus integer</i> (Thunb) Merr
14			Kiwi/ <i>Kiwi Fruit</i>	Kiwi Gold/ <i>Yellow Kiwi</i> / <i>Golden Kiwi</i> fruit Kiwi Hijau/ <i>Green Kiwi</i> fruit	<i>Artocarpus champeden</i> (Lour.) Stokes, <i>Artocarpus integrifolia</i> L.f. <i>Actinidia sp</i> <i>Actinidia chinensis</i>
15			Kelengkeng/ <i>Longan</i>		<i>Actinidia deliciosa</i>
16			Matoa/ <i>Island Lychee</i>	Matoa Kulit Merah / <i>Emme</i> <i>Bhanggahe</i> Matoa Kulit Hijau / <i>Emme</i> <i>Anokhong</i> Matoa Kulit Kuning / <i>Emme</i> <i>Khabhetaw</i>	<i>Dimocarpus longan</i> <i>Pometia pinnata</i> <i>Pometia pinnata</i> <i>Pometia pinnata</i> <i>Pometia pinnata</i>
17			Leci / <i>Litchi</i> / <i>Lychee</i>		<i>Litchi chinensis</i>
18			Mangga / <i>Mango</i>	Mangga Kemang	<i>Mangifera indica</i> L. <i>Mangifera caesia</i> Jack

No	Kelompok	Sub Kelompok	Jenis Pangan	Sub Jenis Pangan / Varian	Nama Latin
				Mangga Kweni Mangga Pakel	<i>Mangifera odorata</i> Griff <i>Mangifera foetida</i> Lour
			19 Manggis/ <i>Mangosteen</i>		<i>Garcinia mangostana</i>
			20 Kedondong/ <i>Ambarella/ Jew Plum</i>		<i>Spondias dulcis</i>
			21 Pepaya/ <i>Papaya/ Paw Paw/ Papaw</i>	Semua Jenis Pepaya	<i>Carica papaya</i> L.
			22 Pepaya Gunung / <i>Carica</i>		<i>Vasconcellea cundinamaricensis</i> <i>Badillo</i>
			23 Markisa/ <i>Passion Fruit</i>	Markisa Ungu Markisa Konyal Markisa Kuning Markisa Erbis	<i>Passiflora edulis</i> var. <i>edulis</i> <i>Passiflora ligularis</i> <i>Passiflora edulis</i> var. <i>flavicarpa</i> <i>Passiflora quadrangularis</i>
			24 Kesemek/ <i>Persimmon</i>	Kesemek Jepang/ <i>Japanese Persimmon/ Kaki Fruit</i> Kesemek Amerika/ <i>American Persimmon</i>	<i>Diospyros kaki</i> <i>Diospyros virginiana</i>
			25 Buah Negeri/ <i>Bisbul</i>		<i>Diospyros discolor</i>
			26 Nenas/ <i>Pineapple/ Ananas</i>		<i>Ananas comosus</i>
			27 Delima/ <i>Pomegranate</i>		<i>Punica granatum</i>
			28 Rambutan	Kapulasan Pulasan/ <i>Kapulasan/ Rambutan Paroh</i>	<i>Nephelium lappaceum</i> <i>Nephelium mutabile</i> <i>Nephelium chryseum</i>
			29 Kecapi/ <i>Santol Fruit/ Wild Mangosteen</i>		<i>Sandoricum koeijape</i> (Burm. f.) Merr.
			30 <i>Spanish Lime/ Genipe</i>		<i>Melicoccus bijugatus</i>
			31 Asam Jawa/ <i>Tamarind</i>		<i>Tamarindus indica</i>
			32 Buah Naga/ <i>Dragon Fruit/ Pitaya</i>	Buah Naga Kulit Merah Daging Buah Putih/ <i>White Dragon Fruit</i> Buah Naga Kulit Merah Daging Buah Merah/ <i>Red Dragon Fruit</i> Buah Naga Kulit Kuning Daging Buah Putih/ <i>Yellow Dragon Fruit</i> Buah Naga Dengan Warna Sangat Merah/ <i>Super Red Dragon Fruit</i>	<i>Hyllocereus undatus</i> <i>Hyllocereus polyrhizus</i> <i>Selenicereus megalanthus</i> <i>Hyllocereus costaricensis</i>

No	Kelompok	Sub Kelompok	Jenis Pangan	Sub Jenis Pangan / Varian	Nama Latin
9			Bidara/Widara/ <i>Jaekal Jujube</i>	Buah Bidara/Widara/Kurma Cina/ <i>Indian Jujube</i> Kurma Cina Merah / <i>Jujube</i>	<i>Ziziphus sp.</i> <i>Ziziphus mauritiana</i>
10			Karendang/ <i>Natal Plum</i>		<i>Carissa macrocarpa</i>
11			Zaitun / <i>Table Olives</i>		<i>Olea europaea L.</i>
12			Ceremai/ <i>Star Goosberry</i>		<i>Phyllanthus acidus</i>
13			Dewandaru/ <i>Ceremai</i>		<i>Eugenia uniflora</i>
14			<i>Belanda/ Brazilian Cherry</i>		<i>Solanum betaceum Cav.</i>
15			Terung Belanda/ <i>Tamarillo</i>		<i>Malpighia emarginata</i>
16			<i>Acerola/ Stanci/ Cerry Barbados</i>		<i>Phyllanthus emblica</i>
17			Buah Amla/ <i>Melaka</i>		<i>Chrysobalanus icaco</i>
18			<i>Cocoplum</i>		<i>Syzgium cumini</i>
19			Jambiang/ <i>Juwet / Java Plum</i>		<i>Anidesma Burinus L</i>
20			Buni/ <i>Bignay</i>		<i>Syzgium polycephalum</i>
21			Gowok		<i>Flacourtia inermis</i>
22			Lobi-Lobi/ <i>Batoko Plum</i>		<i>Flacourtia rukam</i>
23			Rukem/ <i>Governor's Plum</i>		<i>Solanum muricatum Aiton</i>
24			<i>Pepino</i>		<i>Solanum quitoense</i>
25			<i>Naranjila/ Lulo</i>		<i>Muntingia calabura</i>
26			<i>Kersen/ Jamaica Cherry</i>		<i>Physalis</i>
26			<i>Ciplukan/ Ground Cherry</i>		
1			<i>Blueberries</i>	<i>Blueberry</i> <i>Blueberry Highbush</i> <i>Blueberry Lowbush</i> <i>Blueberry Rabbiteye</i> <i>Bog Bilberry</i> <i>Red Bilberry</i>	<i>Vaccinium sect. Cyanococcus</i> <i>Vaccinium corymbosum</i> <i>Vaccinium angustifolium</i> <i>Vaccinium virgatum</i> <i>Vaccinium uliginosum</i> <i>Vaccinium myrtillus L.</i>
2			<i>Cranberry</i>		<i>Vaccinium subg. Oxycoccus</i>
3			<i>Cowberry</i>		<i>Vaccinium vitis-idaea</i>
4			<i>Huckleberries</i>		<i>Vaccinium membranaceum Dougl</i>
5			<i>Whortleberry</i>		<i>Vaccinium myrtillus</i>
6			<i>Currant</i>	<i>Black, Red, White Currant</i>	<i>Ribes nigrum</i>
7			<i>Gooseberry</i>		<i>Ribes uva-crispa</i>

03. Beri-Berian Dan Buah Kecil Lainnya

No	Kelompok	Sub Kelompok	Jenis Pangan	Sub Jenis Pangan / Varian	Nama Latin
			8 <i>Raspberries</i>	<i>Red, Black Raspberries</i>	<i>Rubus occidentalis</i>
			9 <i>Bearberry</i>		<i>Arctostaphylos uva-ursi</i>
			10 <i>Blackberry</i>		<i>Rubus sect. Rubus</i>
			11 <i>Deuberrries</i>		<i>Rubus caesius</i>
			12 <i>Boysenberry</i>		<i>Rubus ursinus</i> × <i>Rubus idaeus</i>
			13 <i>Olallie Berry</i>		<i>Rubus laciniatus</i> × <i>ulmifolius</i>
			14 <i>Loganberry</i>		<i>Rubus</i> × <i>loganobaccus</i>
			15 <i>Cloudberry</i>		<i>Rubus chamaemorus</i>
			16 <i>Elderberries</i>		<i>Sambucus nigra</i>
			17 <i>Juneberries</i>		<i>Amelanchier tamarckii</i>
			18 <i>Mulberries</i>		<i>Morus alba</i>
			19 <i>Service Berries</i>		<i>Amelanchier ovalis</i>
			20 <i>Stroberi / Strawberry</i>		<i>Fragaria</i> × <i>ananassa</i>
			21 <i>Anggur / Grapes</i>		<i>Vitis vinifera</i>
			22 <i>Guellder Rose</i>		<i>Viburnum opulus</i>
			04. Jeruk (Citrus)		
			1 <i>Jeruk / Orange</i>	<i>Navel, Cara, Valencia, Lima, Blood Orange</i>	<i>Citrus</i> × <i>sinensis</i>
			2 <i>Jeruk Mandarin / Mandarin Orange</i>	<i>Seville, Bitter Orange, Sour Orange, Marmalade Orange, Bigarade Orange</i>	<i>Citrus</i> × <i>aurantium</i>
			3 <i>Lime</i>	<i>Mandarin, Tangerine, Clementine, Ajourer, Tangelo, Murcot, Sunburst, Shantang, Jeruk Siam, Jeruk Keprok Satsuma</i>	<i>Citrus reticulata</i>
				<i>Jeruk Nipis</i>	<i>Citrus unshui</i>
				<i>Jeruk Purut / Kaffir Lime</i>	<i>Citrus aurantifolia</i>
				<i>Limequat</i>	<i>Citrus hystrix</i>
				<i>Jeruk Limau / Nasaran Mandarin</i>	<i>Citrus</i> × <i>floridana</i>
				<i>Bergamot</i>	<i>Citrus amblycarpa</i>
				<i>Indian Sweet Limes / Palestine Sweet Limes</i>	<i>Citrus bergamia</i>
				<i>Sweet Limes / Mosambis Tahiti Limes</i>	<i>Citrus limetoides</i>
					<i>Citrus limetta</i>
					<i>Citrus latifolia</i>

No	Kelompok	Sub Kelompok	Jenis Pangan	Sub Jenis Pangan / Varian	Nama Latin
			4 Lemon		<i>Citrus Limon.</i>
			5 Kumquat		<i>Citrus japonica</i>
			6 Jeruk Kalamansi / Calamansi		<i>Citrus macrocarpa</i>
		05. Buah Pome	1 Apel/Apple		<i>Malus domestica</i>
			2 Pir / Pear	Pir	<i>Pyrus L.</i>
				Nashi Pears/Oriental Pears	<i>Pyrus Pyrifolia</i>
				Wild Pears	<i>Pyrus pyrastrer</i>
				Ya Pears/Chinese White Pears	<i>Pyrus bretschneideri</i>
			3 Quince/Kwinski		<i>Cydonia oblonga</i>
			4 Cotoneaster		<i>Cotoneaster obovatus</i>
			5 Hawthorn/Pyraacantha		<i>Crataegus crenulata/Pyraacantha crenulate</i>
			6 Biwa/Loquat		<i>Eriobotrya japonica</i>
			7 Medlar		<i>Mespilus germanica</i>
		8 Toyon		<i>Heteromeles arbutifolia</i>	
		9 Rowan		<i>Sorbus aucuparia</i>	
		10 Whitebeam		<i>Sorbus aria</i>	
		06. Buah Dengan Biji atau Endocarp yang Keras/Stone Fruits	1 Ceri/Cherry		<i>Prunus Avium</i>
			2 Buah Plum / Plum		<i>Prunus domestica</i>
			3 Persik/ Peach		<i>Prunus persica</i>
				Nectarine	<i>Prunus persica</i> var. <i>nucipersica</i>
			4 Aprikot/ Apricot		<i>Prunus armeniaca</i>
		5 Mundu/ Caludie Mangosteen		<i>Garcinia dulcis</i>	
		01. Rempah Daun	1 Daun Hisop/ Hyssop Leaves		<i>Hyssopus officinalis</i>
			2 Daun Kunyit/ Turmeric Leaves		<i>Curcuma longa</i> Linn.
			3 Daun Pandan/ Fragrant Screupine		<i>Pandanus amaryllifolius</i>
			4 Daun Salam/ Indonesian Bay Leaf		<i>Syzygium polyanthum</i>
			5 Daun Kemangi/ Holy Basil		<i>Ocimum sanctum</i>
			6 Daun Basil/ Basil		<i>Ocimum basilicum</i>
			7 Daun Seledri/ Celery		<i>Apium graveolens</i> L.
			8 Daun Sirsak/ Soursoop Leaves		<i>Annona muricata</i> L.
6	Rempah				

No	Kelompok	Sub Kelompok	Jenis Pangan	Sub Jenis Pangan / Varian	Nama Latin
9			Daun Ketumbar/ <i>Cilantro/ Chinese Parsley</i>		<i>Coriandrum sativum</i>
10			Daun Kencur/ <i>Aromatic Ginger Leaves</i>		<i>Kaempferia galanga</i> L.
11			Daun Taragon/ <i>Tarragon Leaves</i>		<i>Artemisia dracunculius</i>
12			Daun Artemisia		<i>Artemisia absinthium</i>
13			<i>Southernwood/Wormwood Selatan</i>		<i>Artemisia abrotanum</i>
14			Daun Baru Cina/ <i>Mugwort</i>		<i>Artemisia vulgaris</i>
15			Daun <i>Lovage</i>		<i>Levisticum officinale</i>
16			<i>Marjoram</i>		<i>Origanum majorana</i>
17			<i>Cretan Dittany</i>		<i>Origanum dictamnus</i>
18			<i>Oregano</i>		<i>Origanum vulgare</i>
19			Daun Nasturtium/ <i>Indian Cress</i>		<i>Tropaeolum majus</i>
20			Daun Peterseli / <i>Parsley</i>		<i>Petroselinum crispum</i>
21			Daun Sage/ <i>Culinary Sage</i>		<i>Salvia officinalis, Salvia sclarea</i>
22			Daun <i>Rosemary</i>		<i>Sabia rosmarinus</i>
23			Daun Rue/ <i>Inggau/ Rue</i>		<i>Ruta graveolens</i>
24			Daun <i>Sassafras/ Sassafras</i>		<i>Sassafras albidum</i>
25			<i>Savory, Summer; Winter</i>		<i>Satureja hortensis</i>
26			<i>Sorrel</i>		<i>Rumex acetosa</i>
27			Daun <i>Thyme</i>		<i>Thymus vulgaris</i>
28			Daun <i>Gondopuro/ Wintergreen</i>		<i>Gaultheria procumbens</i>
29			<i>Woodruff</i>		<i>Galium odoratum</i>
30			<i>Salad Burnet</i>		<i>Sanguisorba minor</i>
31			<i>Costmary</i>		<i>Tanacetum balsamita</i>
32			Daun <i>Mint</i>		<i>Mentha</i>
33			<i>Pennyroyal</i>		<i>Mentha pulegium</i>
34			<i>Peppermint</i>		<i>Mentha x piperita</i>
35			<i>Spearmint</i>		<i>Mentha spicata</i>
36			<i>Dill</i>		<i>Anethum graveolens</i>
37			Daun Kari/ <i>Salam Kojia/Fresh Curry Leaves</i>		<i>Murraya koenigii</i>
38			<i>Bay Leaf/Laurel Leaf</i>		<i>Lurus nobilis</i>

No	Kelompok	Sub Kelompok	Jenis Pangan	Sub Jenis Pangan / Varian	Nama Latin
		02. Rempah Lainnya (Buah, Bunga, Batang, Kulit Batang, Rimpang, Biji)	1 Adas Manis / Anis 2 Adas Pedas / Fennel 3 Jintan / Jintan Putih / Cumini 4 Ketumbar / Coriander 5 Lada Hitam / Putih / Pepper 6 Cabai Jawa / Long Pepper 7 Andaliman / Indonesian Lemon Pepper 8 Szechuan Pepper 9 Lada Melegueta 10 Merica Jamaika / Allspice 11 Beri Juniper / Common Juniper 12 Kapulaga / Cardamom 13 Pala / Nutmeg 14 Bunga Pekak / Bunga Lawang / Star Anise 15 Cengkeh / Clove 16 Asam Kandis / False Mangosteen 17 Asam Jawa / Tamarind 18 Kayumanis / Cinnamon 19 Kayumanis Cina / Chinese Cinnamon 20 Mesoyi / Massoi 21 Biji Klabat / Kelabat / Fenugreek 22 Kemiri / Candlenut 23 Kluwek / Football Fruit 24 Lengkuas / Galanga 25 Jahe / Ginger 26 Kunyit / Kunir / Turmeric 27 Temu Kunci / Fingerrroot	Kapulaga Hijau / Green Cardamom. Kapulaga Jawa / True Cardamom / Small Cardamom Biji Pala Fuli / Arit	<i>Pimpinella anisum</i> <i>Foeniculum vulgare</i> Miller <i>Cuminum cyminum</i> L. <i>Coriandrum sativum</i> L. <i>Piper nigrum</i> <i>Piper longum</i> <i>Zanthoxylum acanthopodium</i> DC <i>Zanthoxylum piperitum</i> <i>Aframomum melegueta</i> <i>Pimenta dioica</i> <i>Juniperus communis</i> L. <i>Elettaria cardamomum</i> <i>Amomum cardamomum</i> L. <i>Myristica fragrans</i> <i>Myristica fragrans</i> <i>Myristica fragrans</i> <i>Illicium verum</i> <i>Syzygium aromaticum</i> <i>Garcinia xanthochymus</i> <i>Tamarindus indica</i> L. <i>Cinnamomum burmannii</i> <i>Cinnamomum cassia</i> <i>Cryptocarya massoia</i> <i>Trigonella foenum-graecum</i> <i>Aleurites mollucana</i> <i>Pangium edule</i> <i>Alpinia galanga</i> L. <i>Zingiber officinale</i> <i>Curcuma longa</i> <i>Boesenbergia pandurata</i>

No	Kelompok	Sub Kelompok	Jenis Pangan	Sub Jenis Pangan / Varian	Nama Latin
28			Serai/Sereh Dapur/ Lemon Grass		<i>Cymbopogon citratus</i>
29			Paprika/Bell Pepper		<i>Capsicum annuum</i> var. <i>grossum</i>
30			Cabai/Chili	Cabai Rawit/Chayenne Jalapeno Cone Pepper	<i>Capsicum annuum</i> L. <i>Capsicum frutescens</i> <i>Capsicum annuum</i> var. <i>conoides</i>
31			Saffron		<i>Crocus sativus</i>
32			Biji Dill		<i>Anethum graveolens</i>
33			Sumac		<i>Rhus coriaria</i>
34			Biji Seledri/Celery Seeds		<i>Apium graveolens</i> L.
35			Dong Gui		<i>Angelica sinensis</i>
36			Lavender		<i>Lavandula</i>
37			Parsley Seed		<i>Petroselinum crispum</i>
38			Borage		<i>Borago officinalis</i>
39			Catnip		<i>Nepeta cataria</i>
40			Bunga Kalendula/Calendula		<i>Calendula officinalis</i>
41			Cicely/Sweet Cicely		<i>Myrrhis odorata</i>
42			Mur		<i>Commiphora myrrha</i>
43			Biji Tonka/Tonka Bean		<i>Coumarouna odorata</i>
44			Angelica Archangelica		<i>Archangelica officinalis</i>
45			Lovage		<i>Lovage Levisticum officinale</i>
7	Bahan Penyegar dan Pemanis	01. Bahan Penyegar	1 Biji Kopi/Coffee Bean		<i>Coffea spp.</i>
2			Daun Teh/Tea	Teh	<i>Camelia sinensis</i>
3			Biji Cokelat/Cocoa Bean	Coklat/Kakao	<i>Theobroma cacao</i>
4			Sirih/Betle		<i>Piper betle</i> L.
5			Rosella/Roselle		<i>Hibiscus sabdariffa</i>
6			Sereh Wangi/Ceylon Citronella		<i>Andropogon nardus</i> L.
7			Pinang/Areca Palm		<i>Areca catechu</i>
8			Temulawak/Javanese Ginger		<i>Curcuma xanthorrhiza</i> L.
9			Akar Manis/Licorice		<i>Glycyrrhiza glabra</i>
10			Chamomile		<i>Matricaria recutita</i>
11			Rose Hips		<i>Rosa canina</i> L.
12			Bunga Telang/Blue Pea		<i>Clitorea ternatea</i>
13			Kayu Secang/Sappanwood		<i>Biancaea sappan</i>

No	Kelompok	Sub Kelompok	Jenis Pangan	Sub Jenis Pangan / Varian	Nama Latin
14			Air Kelapa/ Coconut Water		<i>Cocos nucifera</i>
15			Vanili/ Vanilla	<i>Vanilla/Mexican Vanilla / Bourbon Vanilla/ Planifolia Vanilla</i> <i>Vanilla</i> <i>Vanilla odorata C. Presl (Orchidaceae)</i> <i>Tahitian Vanilla</i> <i>Vanilla tahitensis J.W. Moore (Orchidaceae)</i> <i>Maya Vanilla</i> <i>Vanilla eribiana Soto Atenas (Orchidaceae)</i>	
1		02. Pemanis	Tebu/ Sugarcane		<i>Saccharum officinarum</i>
2			Sorgo/ Sorgum/ Sorghum/ Great Millet		<i>Sorghum bicolor</i>
3			Nira Kelapa/ Coconut Sap		<i>Cocos nucifera</i>
4			Nira Aren/ Palm Sap		<i>Arenga pinnata</i>
5			Daun Stevia/ Sweet Leaf/ Sugar Leaf		<i>Stevia rebaudiana</i>
6			Nira Siwalan/ Lontar/ Palmyra Palm Sap		<i>Borassus flabellifer</i>
7			Nira Nipah/ Nipah Palm Sap		<i>Nypa fruticans</i>
8			Sugar Beet		<i>Beta vulgaris var. saccharifera</i>

PANGAN SEGAR ASAL HEWAN



I. Pangan Segar Asal Hewan

No	Kelompok	Sub Kelompok	Jenia Ikan	Sub Jenis Pangan / Varian	Nama Sub Jenis Pangan Dalam Bahasa Inggris	Nama Kelompok Latin
1	Ikan dan Produk Krustasea (Termasuk Kolenoterata, Ekinodermata, Mamalia Air dan Biota Perairan Lainnya)	01. Ikan Bersirip	1. Ikan Air Laut	1 Alu-Alu	<i>Baracuda</i>	<i>Sphyræna</i>
				2 Anemon	<i>Anemone</i>	<i>Condylactis, Entacmaea</i>
				3 Anthias	<i>Sea Bass: Groupers and Fairy Basslets</i>	<i>Dactylanthias</i>
				4 Ayam Ayam	<i>Triggerfis, Filefish, Carangids (Jack & Pompanos)</i>	<i>Abalistes, Acreichthys, Aluterus, Amanes Thamnaconus, Balistes, Canthoeschenia, Canthidermis, Chaetodermis, Cantherhines, Oligoplites, Paramonacanthus, Montacanthus, Pervagor, Pseudaluteres, Pseudomo nacanthus, Xanthichthys</i>
				5 Ayu	<i>Sweetfish</i>	<i>Plecoglossus</i>
				6 Bandeng (Bandeng Laki)	<i>Bonefish</i>	<i>Albula</i>
				7 Barakuda	<i>Baracuda</i>	<i>Sphyræna</i>
				8 Bawal	<i>Pomfret</i>	<i>Brama, Eumegistus, Pampus, Taractes, Taractichthys, Trachinotus, Psenopsis,</i>
				9 Bayeman	<i>Wrasse</i>	<i>Hemigymnus, Cheilrus, Cymolutes, Halichoeres, Bodianus</i>
				10 Belayaran	<i>Whiptail</i>	<i>Coelorrinchus</i>
				11 Beloso	<i>Lizard Fish</i>	<i>Saurida, Synodus</i>
				12 Betok	<i>Damselfish</i>	<i>Acanthochromis, Amblyglyp hidodon, Chromis, Dischistodus, Liopropoma, Neopomacentrus, Pomacentrus, Stegastes</i>
				13 Biji Nangka, Jenggog	<i>Goatfish</i>	<i>Parupeneus, Upeneus, Mulloidichthys</i>
				14 Botana/ Rainbow	<i>Surgeon Fish</i>	<i>Acanthurus, Naso</i>
				15 Buntal	<i>Puffer Fish, Tripodfish</i>	<i>Arothron, Canthigaster, Chilomycterus, Diodon, Triacanthus, Omegophora, Takifugu, Lagocephalus</i>
				16 Cakalang		<i>Katsuwonus</i>
				17 Capungan	<i>Cardinalfish</i>	<i>Apogonichthyoid, Apogonichthys, Cercamia, Neamia, Nectamia, Ostorhinchus, Pseudamia, Rhabdamia, Taeniamia</i>
				18 Dartfish	<i>Wormfish, Dartfish</i>	<i>Aiolops, Ptereleotris</i>
				19 Flathead	<i>Flatfish</i>	<i>Inegocia, Sunagocia</i>
				20 Galuh	<i>Driftfish</i>	<i>Psenes, Ariomma, Cubiceps, Nomeus</i>
				21 Gerot-Gerog	<i>Grunter</i>	<i>Plectorhynchus, Pomadasys</i>

No	Kelompok	Sub Kelompok	Jenia Ikan	Sub Jenis Pangan / Varian	Nama Sub Jenis Pangan Dalam Bahasa Inggris	Nama Kelompok Latin
22		Gindara			<i>Escolar</i>	<i>Lepidocybium</i>
23		Ikan Kaca/ <i>Glassfish</i>			<i>Glassfish</i>	<i>Ambassis</i>
24		Gobi			<i>Goby</i>	<i>Acentrogobius, Atrasalanias, Amoya, Brynarginops, Callogobius, Cryptocentrus, Ctenogobius, Eviota, Fusigobius, Myersina, Oxypurichthys, Parachaeturichthys, Pleurosicya, Silhouettea, Vomerogobius, Istigobius, Oxymetopon, Valenciennesa</i>
25		Golak golok			<i>Herring</i>	<i>Chirocentrus</i>
26		Grubfish			<i>Grubfish, Sandperch</i>	<i>Paraperis</i>
27		Gulamah, Tigawaja			<i>Croaker</i>	<i>Argyrosomus, Atrobucca, Chrysochir, Johnius, Otolithes, Panna, Pennahia, Protonibea, Nibea</i>
28		Gurnard			<i>Gurnard</i>	<i>Dactyloptena</i>
29		Hiu			<i>Shark</i>	<i>Alopias, Atalomycterus, Carcharhinus, Carcharias, Centrophorus, Centroscyminus, Cephaloscyllium, Chaenogaleus, Chimaera, Chiloscyllium, Cirrhigaleus, Dalatias, Deania, Eusphyra, Galeocerdo, Galeorhinus, Ginglymostoma, Glyphis, Halaelurus, Hemipristis, Hemiscyllium, Hemirhachis, Hemigaleus, Heptranchias, Hexanchus, Hydrolagus, Lago, Isistius, Isurus, Lamnopsis, Laxadon, Megachasma, Mustellus, Nasolamia, Nebrius, Negaprion, Odontaspis, Orectolobus, Paragaleus, Prionace, Pseudocarcharias, Pseudotriakis, Rhizoprionodon, Scoliodon, Squalus, Squatina, Stegostoma, Triaenodon, Zameus</i>
30		Ikan Batu, <i>Scorpion</i>			<i>Stonefish, Scorpionfish</i>	<i>Inimicus, Pterois</i>
31		Ikan Kodok			<i>Frogfish</i>	<i>Lophiocharon, Nudiantennarius, Antennatus</i>
32		Ikan Tawon			<i>Waspfish</i>	<i>Ablabys</i>
33		Julung - Julung			<i>Garfish</i>	<i>Hemiramphus, Hyporhamphus, Nomorhamphus, Dermogenys</i>
34		Kaci Kaci			<i>Sweetlips</i>	<i>Diagramma, Pelates, Plectorhynchus</i>
35		Kadal			<i>Lizard Fish</i>	<i>Synodus</i>
36		Kakap			<i>Snapper, Sea Bass, Sea Bream</i>	<i>Lutjanus, Acropoma, Argyrops, Etelis, Kyphosus, Symphorus, Paracaesio, Liopropoma, Pinjalo, Pristipomoides, Pseudanthias, Ocyurus</i>
37		Kakatua			<i>Parrotfish</i>	<i>Cetoscarus, Chlorurus</i>
38		Kapas Kapas			<i>Biddy</i>	<i>Geres, Gerres</i>

No	Kelompok	Sub Kelompok	Jenia Ikan	Sub Jenis Pangan / Varian	Nama Sub Jenis Pangan Dalam Bahasa Inggris	Nama Kelompok Latin
39		Karang			Coral	<i>Parazoanthus</i>
40		Kembung			<i>Mackerel, turreffish</i>	<i>Scomberomorus, Rastrelliger, Tetrosomus</i>
41		Kepe-Kepe			<i>Butterflyfish, Spadefish</i>	<i>Parachaetodon, Platax</i>
42		Kerapu			<i>Toothfish, Grouper</i>	<i>Cephalopholis, Chelidoperca, Choerodon, Dissostichus, Aethaloperca, Anupperodon, Epinephelus, Gracila, Plectropomus, Plectranthias, Variola</i>
43		Kod			Cod	<i>Anoplopoma, Melanogrammus, Merluccius, Notothenia</i>
44		Kumai			<i>Sauitail</i>	<i>Prionurus</i>
45		Kuniran			<i>Slopefish</i>	<i>Symphysanodon</i>
46		Kurisi			<i>Sea Bream, Sea Bream, Bream, Whiptail</i>	<i>Nemipterus, Parascolopsis, Pentapodus, Pristipomoides, Aphareus, Aprion, Etelis, Gymnocranius, Porcostoma</i>
47		Kuwe			<i>Trevally</i>	<i>Atropis, Atule, Lactarius, Carangoides, Caranx, Uraspis, Alecatis, Gnathanodon, Seriola, Ulua</i>
48		Layang			Scad	<i>Decapterus</i>
49		Layaran			<i>Saiffish</i>	<i>Istiophorus</i>
50		Layur			<i>Hairtail, taper-tail ribbonfish</i>	<i>Lepturacanthus, Trichurus, Zu</i>
51		Lele (Lele Laut)			<i>Caffish</i>	<i>Plotosus</i>
52		Lemadang			<i>Dolphin Fish</i>	<i>Coryphaena</i>
53		Lencam			<i>Emperor</i>	<i>Gymnocranius, Lethrinus, Monotaxis</i>
54		Lepu			<i>Scorpionfish</i>	<i>Apistus, Pontinus, Scorpaena, Scorpaenopsis, Rhinopias, Sebastapistes</i>
55		Lidah			<i>Toungefish, Tonguesole, Flatfish</i>	<i>Brachirus, Cynoglossus, Symphurus</i>
56		Longfin			<i>Longfin</i>	<i>Plesiops</i>
57		Mackerel			<i>Mackerel</i>	<i>Gempylus, Scomber, Pleurogrammus</i>
58		Mandarin			<i>Dragonet</i>	<i>Repomucenus</i>
59		Martin			<i>Martin</i>	<i>Kajikia, Makaira, Tetrapturus</i>
60		Mata Besar			<i>Bigeeye</i>	<i>Beryx, Cookeolus, Helicolenus, Sebastolobus</i>
61		Monkfish			<i>Monkfish</i>	<i>Lophius</i>
62		Napoleon			<i>Tuskfish, Wrasse</i>	<i>Choerodon, Iniistius</i>
63		Opah			<i>Opah</i>	<i>Lampris</i>
64		Palmas (Aesi)			<i>Saury</i>	<i>Saurida</i>

No	Kelompok	Sub Kelompok	Jenia Ikan	Sub Jenis Pangan / Varian	Nama Sub Jenis Pangan Dalam Bahasa Inggris	Nama Kelompok Latin
65				Pari	Ray	<i>Aetobatus, Aetomylaeus, Amphioleistus, Dasyatis, Dipturus, Gymnura, Himantura, Mobula, Myliobatis, Narcine, Neotrygon, Okamejei, Pastinachus, Plesiobatis, Pristis, Pteroplatytrigon, Rhinoptera, Rhinobatos, Rhynchobatus, Taeniura, Taeniurops, Urogymnus, Urolophus</i>
66				Pasir Pasir	Bream	<i>Scolopsis, Pentapodus</i>
67				Pedang	Sword Fish	<i>Xiphias</i>
68				Pelangi	Whiptail	<i>Pentapodus</i>
69				Peperek (Petek, Pilok)	Ponyfish	<i>Equulites, Eubleekeria, Gazza, Mene, Secutor</i>
70				Pipefish	Pipefish	<i>Apterygocampus, Bhanotia, Choeroichthys, Cosmocampus, Dorythamphu, Dorythamphus, Dunckerocampus, Halicampus, Micrognathus, Miryichthys, Trachyrhamphus, Phoxocampus, Siokunichthys, Solenostomus</i>
71				Pisang Pisang	Fusilier, Snapper	<i>Caesio, Paracaesio, Pterocaesio</i>
72				Rainbow (Buntet, Lepu Karang)	Sunfish, Stinger, Stargazer	<i>Masturus, Minous, Uranoscopus</i>
73				Rangginan	Soldier Fish	<i>Myripristis</i>
74				Remora	Remora	<i>Remora, Echeneis</i>
75				Renbow	Threadfin	<i>Pentapodus</i>
76				Rubyfish	Rubyfish	<i>Plagiogeneion, Erythrocles</i>
77				Sarden	Sardinella, Shad, herring	<i>Amblygaster, Anodontostoma, Chirocentru, Dussumeria, Herklotsichthys, Hilsa, Ilisha, Opisthopterus, Spratelloides, Nematalosa</i>
78				Scat	Scat	<i>Rhinoprenes</i>
79				Sebelah	Flounder, Flaffish	<i>Poecilopsetta, Pseudorhombus, Arnoglossu, Bothus, Cladoderma, Cynoglossus, Eopsetta, Grammatobothus, Pardachirus, Psettina, Psettodes, Soleichthys, Solea, Zebrias, Achirus, Hippoglossus, Paralichthys, Reinhardtius, Asterorhombus,</i>
80				Selar	Travelly, Uraspis	<i>Naucrates</i>
81				Sembilang	Catfish	<i>Plotosus</i>
82				Senangin	Threadfin	<i>Eleutheronema, Filinanus</i>
83				Serinding	Cardinalfish	<i>Priacanthus</i>
84				Sidat	Conger	<i>Muraenesox</i>

No	Kelompok	Sub Kelompok	Jenia Ikan	Sub Jenis Pangan / Varian	Nama Sub Jenis Pangan Dalam Bahasa Inggris	Nama Kelompok Latin
				85	Slengsang / Tembang	<i>Sardinella</i>
				86	<i>Squirrelfish</i>	<i>Neoniphon, Sargocentron</i>
				87	Swaggi	<i>Priacanthus, Myripristis, Sargocentron</i>
				88	Talang Talang	<i>Scomberoides</i>
				89	Talang Talang	<i>Scomberoides</i>
				90	Tenggiri	<i>Scomberomorus</i>
				91	Terbang	<i>Cheilopogon, Cypselurus, Hirundichthys, Parexocoetus</i>
				92	Teri	<i>Auxaus, Dipterygionotus, Engrasicholina, Hypoatherina, Setipinna, Stolephorus, Thryssa, Hypomesus</i>
				93	Terubuk	<i>Tenualosa</i>
				94	Todak	<i>Tetrapturus</i>
				95	Tongkol	<i>Auxis, Euthymus, Sarda, Thunnus,</i>
				96	Tuna	<i>Gymnosarda, Thunnus, Euthymus</i>
				97	Wahoo	<i>Acanthocybium</i>
			2. Ikan Air Tawar	1	Barbus (Lalawak, Wader, Tawes, Berukung, Tontong Tebu, Nilem)	<i>Barbomyxus, Barbodes, Barbichthys, Cyclocheilichthys, Osteochilus</i>
				2	Batak	<i>Neolissochilus</i>
				3	Baung	<i>Hemibagrus, Mystus, Bagrichthys</i>
				4	Belida Iopis	<i>Chitala Iopis</i>
				5	Bilis	<i>Clupeichthys</i>
				6	Chinese Carp (Karpur, Mola)	<i>Ctenopharyngodon, Hypophthalmichthys</i>
				7	Gabus	<i>Channa</i>
				8	Gobi	<i>Glossogobius, Arcygobius,</i>
				9	Gurame	<i>Helostoma, Osphronemus, Osphronemus</i>
				10	Hampal	<i>Hampala</i>
				11	Jelawat	<i>Leptobarbus</i>
				12	Kili (Buntal Pecos)	<i>Cyprinodon</i>
				13	Lais	<i>Cryptopterus, Phalacrotonus</i>

No	Kelompok	Sub Kelompok	Jenia Ikan	Sub Jenis Pangan / Varian	Nama Sub Jenis Pangan Dalam Bahasa Inggris	Nama Kelompok Latin
				14 Lampan	<i>Barb</i>	<i>Barbonymus</i>
				15 Lele	<i>Catfish, Walkingcatfish</i>	<i>Corydoras, Clarias</i>
				16 Loach	<i>Carp</i>	<i>Rasbora</i>
				17 Manyung	<i>Catfish</i>	<i>Arius</i>
				18 Mas (Mas, Rasbora/ Seluang, Genggehek)	<i>Carp</i>	<i>Cyprinus, Kottelata, Mystacoleucis, Rasbora</i>
				19 Minnow	<i>Carp</i>	<i>Macrorhynchichthys</i>
				20 Mujair	<i>Cichlid</i>	<i>Oreochromis</i>
				21 Nilem (Kelabau, Hara, Haro, Aro)	<i>Carp</i>	<i>Osteochilus</i>
				22 Ompok	<i>Catfish</i>	<i>Ompok</i>
				23 Pari (Pari Air Tawar, Pari Motoro)	<i>Ray</i>	<i>Potamotrygon</i>
				24 Patin	<i>Catfish, Pangas Catfish</i>	<i>Cinetodus, Mystus, Ageneiosus, Hemibagrus, Pimelodus, Schilbe, Helicophagus, Pangasius, Pteropangasius</i>
				25 Salmon	<i>Salmon</i>	<i>Salminus, Salmo</i>
				26 Sapu Sapu	<i>Catfish</i>	<i>Synodontis</i>
				27 Semah	<i>Carp</i>	<i>Tor</i>
				28 Sepat	<i>Gouramy</i>	<i>Pristolepis, Trichopodus</i>
				29 Tali Tali	<i>Loach</i>	<i>Nemacheilus</i>
				30 Tambra	<i>Carp</i>	<i>Tor</i>
				31 Tapah	<i>Wallago Catfish, Catfish</i>	<i>Wallago</i>
				32 Tawes	<i>Barb</i>	<i>Puntipiplites,</i>
				33 Teri (Teri Cina)	<i>Ice Fish, Silverside</i>	<i>Neosalanx, Atherinomorus</i>
				34 Torsoro	<i>Carp</i>	<i>Tor</i>
				35 Tropheus	<i>Tropheus</i>	<i>Tropheus</i>
				3. Ikan Air Payau	<i>Wormfish</i>	<i>Parioglossus</i>
				2 Sidat	<i>Eel</i>	<i>Anguilla</i>
				1 Bandeng	<i>Bonefish`</i>	<i>Elops, Chanos</i>
			4. Ikan Multi Perairan			

No	Kelompok	Sub Kelompok	Jenia Ikan	Sub Jenis Pangan / Varian	Nama Sub Jenis Pangan Dalam Bahasa Inggris	Nama Kelompok Latin
2			Baronang		<i>Rabbit Fish</i>	<i>Siganus</i>
3			Bawal		<i>Spadefish, Pomfret</i>	<i>Ephippus, Parastromateus</i>
4			Bayeman		<i>Wrasse</i>	<i>Oxycheilinus</i>
5			Belanak		<i>Mullet</i>	<i>Crenimugil, Mugil, Chelon, Moolgarda, Osteomugil, Planiliza, Yalamugil</i>
6			Belut		<i>Eel</i>	<i>Anguilla</i>
7			Betok		<i>Damselfish</i>	<i>Dischistodus, Pomacentrus</i>
8			Biji nangka, Jenggot		<i>Goatfish</i>	<i>Parupeneus, Upeneus</i>
9			Bilis		<i>Sprat</i>	<i>Clupeoides</i>
10			Bombay		<i>Bombay Duck</i>	<i>Harpadon</i>
11			Botana		<i>Unicornfish, Surgeon Fish</i>	<i>Naso</i>
12			Bulan Bulan		<i>Tarpons</i>	<i>Megalops</i>
13			Buntal		<i>Puffer Fish</i>	<i>Amblyrhynchotes, Canthigaster, Dichotomycetere Halophryne, Lagocephalus, Leiodon, Marlyna, Torquigener, Takifugu, Arothron, Tylerius</i>
14			Capelin		<i>Capelin</i>	<i>Sprinchus</i>
15			Cobia		<i>Cobia</i>	<i>Rachycentron</i>
16			Dartfish		<i>Wormfish</i>	<i>Pariglossus</i>
17			Dayung		<i>Paddlefish</i>	<i>Acipenser</i>
18			Gabus		<i>Snakehead</i>	<i>Giuris</i>
19			Gobi		<i>Goby</i>	<i>Arcyobius, Aurigequula Boleophthalmu, Fusigobius, Glodigobius, Glossogobius, Gnatholepis, Gobiopsis, Istigobius, Macrodontogobius, Oligolepis, Psammogobius, Pariglossus, Silhouettea, Tramma, Oxyleletris</i>
20			Gulamah, Tigawaja		<i>Croaker</i>	<i>Johnius, Otolithoideis, Larimichthys</i>
21			Gurnard		<i>Gurnard</i>	<i>Lepidotrigla</i>
22			Ikan Kodok		<i>Frogfish, Toadfish</i>	<i>Antennarius, Batrachomoeus</i>
23			Julung-Julung		<i>Garfish</i>	<i>Hyporhamphus, Hemiramphus</i>
24			Kaca		<i>Glassfish</i>	<i>Ambassis</i>
25			Kakap		<i>Snapper, Sea Bass, Fairy Basslets, Seabream</i>	<i>Lobotes, Lutjanus, Lates, Macolor, Odonthanitus, Pagrus, Proteracanthus, Psammoperca, Lateolabrax</i>
26			Kakatua		<i>Parrotfish</i>	<i>Scarus</i>
27			Kapas Kapas		<i>Biddy</i>	<i>Gerres, Pentaprion</i>

No	Kelompok	Sub Kelompok	Jenia Ikan	Sub Jenis Pangan / Varian	Nama Sub Jenis Pangan Dalam Bahasa Inggris	Nama Kelompok Latin
				28 Kembang	Mackerel	<i>Rastrelliger, Scomber</i>
				29 Kerapu	Groupers	<i>Cephalopholis, Ephinepelus, Achoerodus, Epinephelus</i>
				30 Kerong Kerong	Grunters, Terapon	<i>Helotes, Terapon</i>
				31 Ketang Ketang	Sticklefish	<i>Drepane</i>
				32 Kod	Cod	<i>Gadus</i>
				33 Kumai	Unitcornfish	<i>Naso</i>
				34 Kurisi	Bream	<i>Parascolopsis, ArgYROPS</i>
				35 Kuwe	Trevally	<i>Lectarius, Trachinotus, Carangoides, Caranx, Megalaspis, Pseudocaranx</i>
				36 Layang	Scad	<i>Alepes, Decapterus</i>
				37 Lele	Catfish	<i>Neonarius</i>
				38 Lemuru	Sardinella, Herring	<i>Sardinella</i>
				39 Lencam	Emperor, Seabream	<i>Gymnocranius, Acanthopagrus, Lethrinus</i>
				40 Lepu	Scorpionfish, Yellowtail	<i>Neosebastes, Scorpaenopsis, Sebastiscus, Uranoscopus</i>
				41 Lidah	Sole	<i>Synaptura</i>
				42 Manyung	Catfish	<i>Arius, Brustiarius, Nemapteryx, Neonarius, Netuma, Plicofollis</i>
				43 Mujair	Cichlid	<i>Oreochromis</i>
				44 Nila	Cichlid	<i>Oreochromis</i>
				45 Pari	Ray	<i>Aetomylaeus, Dasyatis, Himantura, Pateobatis, Rhynchobatus, Trygon, Glaucostegus, Potamotrygon, Rhinobatos</i>
				46 Patin	Catfish	<i>Phalacrotonotus, Plicofollis, Brachiplatistoma, Pimelodus, Pseudotauchenipterus</i>
				47 Peperek	Ponyfish	<i>Aurigequula, Equulites, Eubleekeria, Gazza, Leiognathus, Photopectoralis, Secutor</i>
				48 Pickarel	Pickarel	<i>Esox</i>
				49 Pipefish	Pipefish	<i>Hippichthys, Halicampus</i>
				50 Rejung	Withing	<i>Sillago</i>
				51 Salmon (Salem, Salmon Bungkok, Salmon Chum)	Salmon, Trout	<i>Elagatis, Oncorhynchus, Oncorhynchus</i>
				52 Sarden (Japuh, Sarden)	Sardinella, Herring	<i>Dussumieria, Clupea, Sardina, Sardinella</i>
				53 Sebelah	Flatfish	<i>Canthigaster, Cynoglossus, Paraplagusia</i>
				54 Selar	Scad, Trevally	<i>Selar, Setaroides</i>

No	Kelompok	Sub Kelompok	Jenia Ikan	Sub Jenis Pangan / Varian	Nama Sub Jenis Pangan Dalam Bahasa Inggris	Nama Kelompok Latin
				55 Senangin	<i>Threadfin</i>	<i>Polydactylus</i>
				56 Sidat	<i>Conger, Eel</i>	<i>Muraenox, Uroconger, Anguilla, Brotula</i>
				57 Slengseng (Cancang, Ande Ande, Tembang, Sanma)	<i>Sardinella, Mackerel, Saury</i>	<i>Escuatoxa, Grammatocyrinus, Sardinella, Cololabis, Trachurus</i>
				58 Talang Talang	<i>Queenfish</i>	<i>Scomberoides</i>
				59 Teri (Teri, Bulu Ayam, Asin Pakang, Sangko, Bangkok)	<i>Anchovy, Thryssa, Silverside</i>	<i>Thryssa, Atherinomorus</i>
				60 Veliver	<i>Velifer</i>	<i>Velifer</i>
				1 Udang	<i>Shrimp</i>	<i>Arafulapenaeopsis, Artemia, Batepenaeopsis, Euphausia, Heterocarpus, Kishinouyepenaeopsis, Lysiosquilla, Megokris, Metapenaeus, Metapenaeopsis, Mierspenaeopsis, Miyakeella, Nephrops, Odontodactylus, Pandanus, Parapenaeopsis, Penaeus, Trachysalambria</i>
				2 Rajungan	<i>Crab</i>	<i>Charybdis, Portunus</i>
				3 Kepiting	<i>Crab</i>	<i>Ocyrode, Trapezia, Chionoecetes, Erinacrus, Paratithodes</i>
				4 Lobster	<i>Lobster</i>	<i>Pambacus, Panulirus, Parribacus, Scyllarides, Homarus, Ibacus, Jasus</i>
				5 Belangkas	<i>Crab</i>	<i>Carcinoscorpius, Tachypleus</i>
				1 Udang	<i>Prawn</i>	<i>Cherax, Macrabranchium</i>
				2 Kepiting	<i>Crab</i>	<i>Parathelphusa</i>
				3 Lobster	<i>Lobster</i>	<i>Cherax, Procambarus</i>
				1 Kepiting	<i>Crab</i>	<i>Episesarma</i>
				1 Udang	<i>Shrimp, Prawn</i>	<i>Atyppenaeus, Harpiosquilla, Mesopodopsis, Metapenaeus, Penaeus, Pleoticus, Macrobrachium</i>
				2 Kepiting	<i>Crab</i>	<i>Birgus, Ramina, Scylla, Limulus, Eriocheir, Cardisoma, Varuna, Callinectes</i>
				3 Rajungan	<i>Crab</i>	<i>Podophthalmus, Xiphonectes</i>
				4 Lobster	<i>Lobster</i>	<i>Thalassina, Thenus, Procambarus</i>
				02. Krustasea		
			1. Laut			
			2. Tawar			
			3. Payau			
			4. Multi Perairan			

No	Kelompok	Sub Kelompok	Jenia Ikan	Sub Jenis Pangan / Varian	Nama Sub Jenis Pangan Dalam Bahasa Inggris	Nama Kelompok Latin
		03. Moluska	1. Laut	1 Cumi-Cumi	<i>Squid</i>	<i>Photololigo, Illex</i>
				2 Kerang Sumping, Abalon)	<i>Clam, Abalone</i>	<i>Amusium, Common, Haliotis</i>
				3 Siput	<i>Snail</i>	<i>Aplysia, Bursatella, Cussis, Chromodoris, Clithon, Cymbiolla, Haliotis, Hexabranthius, Murex, Nautilus, Strombus, Crassostrea, Spondylus, Scapharca</i>
				4 Tiram	<i>Oyster</i>	
			2. Payau	1 Kerang	<i>Clam</i>	<i>Geloina</i>
				3. Multi Perairan	1 Cumi-Cumi	<i>Squid</i>
				2 Gurita	<i>Octopus</i>	<i>Amphioctopus</i>
				3 Sotong	<i>Cuttlefish</i>	<i>Pharaoah</i>
				4 Kerang	<i>Clam, Abalone, Scallop</i>	<i>Haliotis, Tridacna, Anadara, Atrina, Austrovenus, Corbula, Cypraea, Ensis, Haliotis, Limaria, Mauritia, Meretrix, Mercenaria, Malleus Mizuhopecten, Parelata, Pharus, Pholas, Pinctada, Perna, Rochia, Ruditapes, Siliqua, Tapes, Tegillarca, Telescopium, Ylistrum, Tectus, Vivere, Bursidae, Calcinus, Cypraeacassis, Erosaria</i>
				5 Keong	<i>Snail</i>	<i>Babylonia</i>
				6 Siput	<i>Snail</i>	<i>Brunneifusus, Achatina, Angaria, Babylonica, Cassis, Cellana, Cerithium, Cypraea, Cymbiolla, Cantharus, Cerithidea, Charonia, Conus, Cypraea, Dolabella, Hemifusus, Monetaria, Murexming, Phyllidia, Pila, Pugilina, Strombus, Tectus, Turbo</i>
				7 Tiram	<i>Clam, Oyster</i>	<i>Crucibulum, Corbicula, Magallana, Panopea, Pteria, Placuna, Pinctada, Placopecten, Spisula, Corbicula, Saccostrea, Spondylus, Crassostrea</i>
			8 Remis	<i>Clam</i>	<i>Perna</i>	
		04. Kolenterata	1. Multi Perairan	1 Ubur-Ubur	<i>Jelly Fish</i>	<i>Mastigias, Cassiopea</i>
		05. Ekinodermata	1. Laut	1 Teripang	<i>Sea Cucumber, Sea Urchin, Sea Apple</i>	<i>Actinopyga, Bohadschia, Echinus, Euapta, Holothuria, Ophioderma, Pseudocolochirus, Stichopus, Synapta, Thelenota</i>

No	Kelompok	Sub Kelompok	Jenis Ikan	Sub Jenis Pangan / Varian	Nama Sub Jenis Pangan Dalam Bahasa Inggris	Nama Kelompok Latin
		06. Mamalia Air	1. Laut	1 Paus	<i>Whale</i>	<i>Pephoracephala</i>
		07. Biota Perairan Lainnya	1. Laut	1 Cacing	<i>Shipworm</i>	<i>Bactronophorus</i>
				2 Kutu Laut	<i>Chiton</i>	<i>Acanthopleura</i>
			2. Tawar	1 Belut	<i>Eel</i>	<i>Mastacembelus, Protopterus, Monopterus, Electrophorus</i>
			3. Multi Perairan	1 Kuda Laut	<i>Sea Horse</i>	<i>Pegasus</i>
				2 Cacing	<i>Worm</i>	<i>Bispira</i>
				3 Belut	<i>Eel</i>	<i>Gymnothorax</i>

No	Kelompok	Sub Kelompok	Jenis Pangan	Sub Jenis Pangan / Varian	Nama Latin	
2	Produk Hewan Mamalia	01. Daging (Hewan Mamalia Selain Mamalia Laut)	1	Kerbau/Bufalo	Kerbau Air/Water Buffalo	<i>Bubalus bubalis</i>
					Water, Daging/Meat	<i>Syncerus caffer caffer</i>
			2	Banteng/Tembadau/ Bull, Daging/Meat		<i>Bos javanicus</i>
					Banteng Amerika/American Bison, Daging/Meat	<i>Bison bison</i>
			3	Sapi/Cow, Daging/Meat		<i>Bos taurus, Bos indicus</i>
					Daging Sapi Muda	<i>Bos taurus, Bos indicus</i>
			4	Zebu, Daging/Meat	Daging Sapi Bali	<i>Bos javanicus domesticus</i>
						<i>Bos taurus indicus</i>
5	Yak, Daging/Meat		<i>Bos grunniens</i>			
			<i>Capra aegagrus hircus, Capra hircus</i>			
6	Kambing/ Goat, Daging/Meat		<i>Oryctolagus cuniculus,</i>			
			<i>Equus caballus</i>			
7	Kelinci/Rabbit, Daging/Meat					
8	Kuda/Horse, Daging/Meat					

No	Kelompok	Sub Kelompok	Jenis Pangan	Sub Jenis Pangan / Varian	Nama Latin
9			Kangguru/ Kangaroo, Daging/ Meat		<i>Macropus rufus</i>
10			Babi/Pig, Daging/ Meat Babi Hutan, Daging/ Meat		<i>Sus scrofa domestica</i> <i>Sus scrofa domestica</i>
11			Rusa/Sambar/Menjanggan/ Deer, Daging/ Meat	Rusa Roe, Daging/ Meat Rusa Elk, Daging/ Meat Rusa, Eropa, Daging/ Meat Rusa, Merah, Daging/ Meat Rusa, Bera, Daging Fallou, Daging / Meat	<i>Cervus unicolor</i> <i>Capreolus capreolus</i> <i>Cervus canadensis</i> <i>Cervus unicolor</i> <i>Cervus unicolor</i>
12			Unta/Camel, Daging/Meat Unta Berpunuk Tunggal, Daging/ Meat		<i>Camelus dromedarius</i> <i>Camelus dromedarius</i>
13			Llama, Daging/ Meat		<i>Llama glama</i>
14			Domba, Daging/ Meat		<i>Ovis aries</i>
15			Moufflon, Daging/ Meat		<i>Ovis musimon</i>
1		02. Karkas (Hewan Mamalia)	Kerbau/Benuang/ Buffalo, Karkas/ Carcass	Kerbau Air/Water Buffalo, Karkas/ Carcass	<i>Bubalus bubalis</i>
2			Banteng/Tembadau/Bull, Karkas/ Carcass	Kerbau Tanjung, Daging/ Buffalo, Cape, Meat	<i>Syncenus caffer caffer</i>
3			Sapi/Cow, Karkas/ Carcass	Banteng, Amerika/ Buffalo, American, Daging/ Meat	<i>Bos javanicus</i> <i>Bison bison</i>
4			Zebu, Karkas/ Carcass	Daging Sapi Muda	<i>Bos taurus, Bos indicus</i>
5			Yak, Karkas/ Carcass	Daging Sapi Bali	<i>Bos taurus, Bos indicus</i> <i>Bos javanicus domestica</i>
6			Kambing/ Goat, Karkas/ Carcass		<i>Bos taurus indicus</i> <i>Bos grunniens</i>
7			Kelinci/ Rabbit, Karkas/ Carcass		<i>Capra aegagrus hircus, Capra hircus</i>
8			Kuda/ Horse, Karkas/ Carcass		<i>Onyctolagus cuniculus,</i> <i>Equus caballus</i>

No	Kelompok	Sub Kelompok	Jenis Pangan	Sub Jenis Pangan / Varian	Nama Latin
9			Kangguru/ Kangaroo, Karkas/ Carcass		<i>Macropus rufus</i>
10			Babi/Pig, Karkas/ Carcass		<i>Sus scrofa domestica</i>
11			Babi Hutan, Karkas/ Carcass Rusa/ Deer/ Menjangan, Karkas/ Carcass	Rusa Roe, Karkas/ Carcass Rusa Elk, Karkas/ Carcass Rusa, Eropa, Karkas/ Carcass Rusa, Merah, Karkas/ Carcass Rusa, Bera/ Deer, Fallow, Karkas/ Carcass	<i>Cervus unicolor</i> <i>Capreolus capreolus</i> <i>Cervus canadensis</i> <i>Cervus unicolor</i> <i>Cervus unicolor</i>
12			Unta/ Camel, Karkas/ Carcass Unta Berpunuk Tunggal, Karkas/ Carcass		<i>Camelus dromedarius</i> <i>Camelus dromedarius</i>
13			Llama, Karkas/ Carcass		<i>Llama glama</i>
14			Domba/ Sheep, Karkas/ Carcass		<i>Ovis aries</i>
15			Mouflon, Karkas/ Carcass		<i>Ovis musimon</i>
1		03. Jeroan (Hewan Mamalia)	Banteng/ Bull, Jeroan Yang Bisa Dimakan/ Edible Offal		<i>Bos javanicus</i>
2			Kerbau/ Buffalo, Jeroan Yang Bisa Dimakan/ Edible Offal		<i>Bubalus bubalis</i>
3			Unta/ Camel, Jeroan Yang Bisa Dimakan/ Edible Offal		<i>Camelus dromedarius</i>
4			Sapi/ Cow, Jeroan Yang Dapat Dimakan/ Edible Offal		<i>Bos taurus, Bos indicus</i>
5			Kambing/ Goat, Jeroan Yang Bisa Dimakan/ Edible Offal		<i>Capra aegagrus hircus, Capra hircus</i>
6			Kuda/ Horse, Jeroan Yang Bisa Dimakan/ Edible Offal		<i>Equus caballus</i>
7			Babi/ Pig, Jeroan Yang Bisa Dimakan/ Edible Offal		<i>Sus scrofa domestica</i>
8			Domba/ Sheep, Jeroan Yang Bisa Dimakan/ Edible Offal		<i>Ovis aries</i>
9			Sapi/ Cow, Ginjal/ Kidney		<i>Bos taurus, Bos indicus</i>

No	Kelompok	Sub Kelompok	Jenis Pangan	Sub Jenis Pangan / Varian	Nama Latin
			10 Sapi/Cow, Hati/Liver		<i>Bos taurus, Bos indicus</i>
			11 Babi/Pig, Ginjal/Kidney		<i>Sus scrofa domestica</i>
			12 Babi/Pig, Hati/Liver		<i>Sus scrofa domestica</i>
			13 Domba/Sheep, Ginjal/Kidney		<i>Ovis aris</i>
			14 Domba/Sheep, Hati/Liver		<i>Ovis aris</i>
			15 Kuda/Horse, Ginjal/Kidney		<i>Equus caballus</i>
			16 Kuda/Horse, Hati/Liver		<i>Equus caballus</i>
		04. Lemak (Hewan Mamalia)	1 Banteng/Bull, Lemak/Fat		<i>Bos javanicus</i>
			2 Kerbau/Buffalo, Lemak/Fat		<i>Bubalus bubalis</i>
			3 Unta/Camel, Lemak/Fat		<i>Camelus dromedarius</i>
			4 Sapi/Cow, Lemak/Fat		<i>Bos taurus, Bos indicus</i>
			5 Kambing/Goat, Lemak/Fat		<i>Capra aegagrus hircus, Capra hircus</i>
			6 Kuda/Horse, Lemak/Fat		<i>Equus caballus</i>
			7 Babi/Pig, Lemak/Fat		<i>Sus scrofa domestica</i>
			8 Domba/Sheep, Lemak/Fat		<i>Ovis aris</i>
			9 Rusa/Deer, Lemak/Fat		<i>Cervus unicorn</i>
		05. Susu	1 Kerbau/Buffalo, Milk		<i>Bubalus bubalis</i>
			2 Unta/Camel, Milk		<i>Camelus dromedarius</i>
			3 Sapi/Cow, Milk		<i>Bos taurus, Bos indicus</i>
			4 Kambing/Goat, Milk		<i>Capra aegagrus hircus, Capra hircus</i>
			5 Domba/Sheep, Milk		<i>Ovis aris</i>
			6 Kuda/Horse, Milk		<i>Equus caballus</i>
3	Produk Unggas	01. Telur	1 Ayam/Chicken, Telur/Egg	Ayam Ras Ayam Kampung	<i>Gallus gallus domesticus</i> <i>Gallus domesticus</i>
			2 Bebek/Duck, Telur/Egg	Itik Serati/Entog/Mentok/ <i>Domestic Muscovy Duck</i> , Bebek Pelari/Itik Pelari/ <i>Domestic Duck Breeds</i> , Telur/Egg Telur Asin	<i>Cairna moschata</i> <i>Anas platyrhynchos domesticus</i> <i>Anas platyrhynchos domesticus</i>

No	Kelompok	Sub Kelompok	Jenis Pangan	Sub Jenis Pangan / Varian	Nama Latin	
			3	Angsa/ Swan Goose, Telur/ Egg	<i>Anser cygnoides</i>	
			4	Kalkun/ Turkey/ Guinea Fowl, Telur/ Egg	<i>Meleagris gallopavo</i>	
			5	Puyuh/Quail, Telur/ Egg	<i>Coturnix coturnix japonica</i>	
			6	Maleo, Telur/ Egg	<i>Macrocephalon maleo</i>	
		02. Daging	1	Ayam/ Chicken, Daging/ Meat	<i>Gallus gallus domesticus</i>	
				Ayam Kampung	<i>Gallus domesticus</i>	
				Ayam Hutan	<i>Gallus gallus</i>	
			2	Bebek/ Duck, Daging/ Meat	Itik Serati/Entog/Mentok/ <i>Domestic Muscovy Duck</i>	<i>Cairina moschata</i>
				Bebek Pelari/Itik Pelari/ <i>Domestic Duck Breeds</i>	<i>Anas platyrhynchos domesticus</i>	
			3	Angsa/ Swan Goose, Daging/ Meat	<i>Anser cygnoides</i>	
			4	Kalkun/ Turkey/ Guinea Fowl, Daging/ Meat	<i>Meleagris gallopavo</i>	
			5	Puyuh/Quail, Daging/ Meat	<i>Coturnix coturnix japonica</i>	
				Puyuh Bobwhite	<i>Colinus virginianus</i>	
				Puyuh California	<i>Callipepla californica</i>	
				Puyuh Pegunungan Salju	<i>Anurophasia monorthonyx</i>	
				Puyuh Semak Hutan	<i>Percula asiatica</i>	
			6	Unggas Guinea/ Guineafowl, Daging/ Meat	<i>Agelastes meleagrides</i>	
				<i>White-breasted guineafowl</i>	<i>Agelastes niger</i>	
				<i>Black guineafowl</i>	<i>Acryllium vulturinum</i>	
				<i>Vulturine guineafowl</i>	<i>Numida meleagris</i>	
				<i>Helmeted guineafowl</i>	<i>Guttera plumifera</i>	
				<i>Plumed guineafowl</i>	<i>Guttera pucherani</i>	
			7	Burung Pagar/ Pheasant, Daging/ Meat	<i>Ithaginis cruentus</i>	
			8	Merpati/ Pigeon, Daging/ Meat	<i>Columba livia</i>	
		03. Jeroan dan Kulit	1	Ayam/ Chicken, Jeroan/ Edible Offal	<i>Gallus gallus domesticus</i>	
				Ayam Kampung	<i>Gallus domesticus</i>	

No	Kelompok	Sub Kelompok	Jenis Pangan	Sub Jenis Pangan / Varian	Nama Latin
2			Bebek/Duck, Jeroan/Edible Offal	Itik Serati/Entog/Mentok/ Domestic Muscovy Duck Bebek Pelari/Itik Pelari, Lemak / Domestic Duck Breeds	<i>Cairina moschata</i> <i>Anas platyrhynchos domesticus</i>
3			Angsa/ Swan Goose, Jeroan/ Edible Offal		<i>Anser cygnoides</i>
4			Kalkun/ Turkey/ Guinea Fowl, Jeroan/ Edible Offal		<i>Meleagris gallopavo</i>
5			Puyuh/ Japanese Quail, Jeroan/ Edible Offal		<i>Coturnix coturnix japonica</i>
6			Maleo, Jeroan/ Edible Offal		<i>Macrocephalon maleo</i>
7			Ayam/ Chicken, Kulit/ Skin	Ayam Ras Ayam Kampung	<i>Gallus gallus domesticus</i> <i>Gallus domesticus</i>
8			Bebek/ Duck, Kulit/ Skin	Itik Serati/Entog/Mentok/ Domestic Muscovy Duck Bebek Pelari/Itik Pelari/ Domestic Duck Breeds	<i>Cairina moschata</i> <i>Anas platyrhynchos domesticus</i>
9			Angsa/ Swan Goose, Kulit/ Skin		<i>Anser cygnoides</i>
10			Kalkun/ Turkey/ Guinea Fowl, Kulit/ Skin		<i>Meleagris gallopavo</i>
11			Puyuh/ Japanese Quail, Kulit/ Skin		<i>Coturnix coturnix japonica</i>
1		04. Lemak	Ayam/ Chicken, Lemak/ Fat	Ayam Ras Ayam Kampung	<i>Gallus gallus domesticus</i> <i>Gallus domesticus</i>
2			Bebek/ Duck, Lemak/ Fat	Itik Serati/Entog/Mentok/ Domestic Muscovy Duck Bebek Pelari/Itik Pelari/ Domestic Duck Breeds	<i>Cairina moschata</i> <i>Anas platyrhynchos domesticus</i>
3			Angsa/ Swan Goose, Lemak/ Fat		<i>Anser cygnoides</i>
4			Kalkun/ Turkey/ Guinea Fowl, Lemak/ Fat		<i>Meleagris gallopavo</i>
5			Puyuh/ Japanese Quail, Lemak/ Fat		<i>Coturnix coturnix japonica</i>
1	05. Sarang Burung		Sarang Burung Walet/ White-Nest Swiftlets		<i>Collocalia fuciphaga</i>

No	Kelompok	Sub Kelompok	Jenis Pangan	Sub Jenis Pangan / Varian	Nama Latin
4	Hewan Invertebrata dan Produknya	01. Annelida	Cacing Wawo / <i>Wawo Worm</i>		<i>Lysitae oele</i>
		Cacing Palolo / <i>Palolo Worm</i>		<i>Eunice viridis</i>	
		Cacing Tanah / <i>Earthworm</i>		<i>Pheretima posthuma</i>	
		02. Arthropoda	Madu / <i>Honey</i>		<i>Apis koschevnikovi, Apis mellifera, Apis cerana, Apis dorsata, Apis andreniformis, Apis florea, Apis laboriosa, Apis trigona, Apis nigrocincta, Apis nuluensis,</i>
		2	Belalang Sawah / <i>Rice Field Grasshopper</i>		<i>Oxya chinensis</i>
		3	Belalang Kayu / <i>Javanese Grasshopper / Shorthorned Grasshopper</i>		<i>Valanga nigricornis</i>
		4	Belalang Kembara / <i>Migratory Locust</i>		<i>Locusta migratoria</i>
		5	Belalang Kuyut / <i>Patanga Kembara / Bombay Locust</i>		<i>Patanga succincta</i>
		6	Belalang Sembah / <i>Praying Manitis</i>		<i>Parhierodula sternosticta</i>
		7	Walang Sangit / <i>Slender Rice Bug</i>		<i>Leptocoris oratorius</i>
		8	Kepik Hijau / <i>Stink Bug</i>		<i>Nezara viridula</i>
		9	Tonggeret / <i>Empress Cicada</i>		<i>Pomponia imperatoria</i>
		10	Ulat / <i>Kepompong Tawon / Larva / Pupa of Vespa annalis</i>		<i>Vespa annalis</i>
		11	Ulat Kumbang Sagu / <i>Sago Palm Weevil Larvae</i>		<i>Rhynchoporus ferrugineus</i>
		12	Ulat Hongkong / <i>Yellow Mealworm</i>		<i>Tenebrio molitor</i>
13	Ulat Jati / <i>Teak Defoliator</i>		<i>Hyblaea puera</i>		
14	Rayap / <i>Laron / Termite / Flying Termite</i>		<i>Macrotermes glibus</i>		
15	Jangkrik / <i>Cricket</i>		<i>Gryllus mitratus</i>		

No	Kelompok	Sub Kelompok	Jenis Pangan	Sub Jenis Pangan / Varian	Nama Latin
5	Produk Amfibi dan Reptil	01. Amfibi	1 Kadal / <i>Lizards</i> 2 Katak / <i>Frogs</i> 3 Katak Kolam / <i>Pool Frog</i> 4 Katak Lembu / <i>Bullfrog</i> 5 Katak Lembu India / <i>Indian Bullfrog</i> 6 Katak Rawa / <i>Marsh Frog</i> 7 Katak/Frog, Dapat Dimakan 8 Katak Gesit / <i>Agile Frog</i> 9 Penyu Hijau / <i>Green Turtle</i> 10 Penyu Loggerhead / <i>Loggerhead Turtle</i> 11 Penyu Sisik / <i>Hawksbill Turtle</i>		<i>Lacertilia sp</i> <i>Anura sp</i> <i>Pelophylax lessonae</i> <i>Lithobates catesbeianus</i> <i>Hoplobatrachus tigerinus</i> <i>Pelophylax ritibundus</i> <i>Pelophylax sp</i> <i>Rana dalmatina</i> <i>Chelonia mydas</i> <i>Caretta caretta</i> <i>Eretmochelys imbricata</i>
		02. Reptil	1 Ular / <i>Snakes</i>		Serpentes

ALGA DAN MIKRO ALGA



I. Alga dan Mikro Alga

No	Kelompok	Sub Kelompok	Jenis Pangan	Sub Jenis Pangan / Varian	Nama Latin
1	Alga dan Mikroalga	01. Alga	1 Rumput Laut / Brown Algae / Yellow Cup Coral		<i>Turbinaria frondens</i>
			2 Rumput Laut / Brown Algae / Crowned Sea Bell		<i>Turbinaria conoides</i>
			3 Rumput Laut / Brown Algae / Triangular Sea Bell		<i>Turbinaria decurrens, Turbinaria vulgaris</i>
			4 Rumput Laut / Kakarian / Brown Algae / Ornate Seaweed		<i>Turbinaria ornata</i>
			5 Rumput Laut Merah / Boeloeng / Bideng / Red Algae		<i>Acanthophora spicifera</i>
			6 Anggur Laut / Bottlebrush Green Seaweed / Christmas Tree Grape Algae		<i>Caulerpa webbiana</i>
			7 Rumput Laut / Seagrass / Serrated Ribbon Seagrass		<i>Cymodocea serrulata</i>
			8 Rumput Laut Alga Merah / Red Algae / Umutgasari		<i>Gelidium amansii</i>
			9 Rumput Laut Merah / Red Algae / Kamalg / Kamtang /		<i>Gelidium cartilagineum, Plocamium cartilagineum</i>
			10 Rumput Laut Merah / Red Algae / Giant Gelidium / Atlantic Agar		<i>Gelidium corneum, Gelidium crinale, Gelidium pannosum</i>
			11 Rumput Laut Merah / Red Algae / Creeping Straggly Weed		<i>Gelidium pusillum</i>
			12 Rumput Laut Merah / Intipintip (Jawa Tengah) / Kembang Karang (Jawa Barat, Banten) / Sangau (Kep. Riau) / Red Algae		<i>Gelidium rigidum, Gelidiella acerosa</i>
			13 Rumput Laut Boeloeng / Rante-Rante; Retek (Lombok) / Segmented Gracilaria		<i>Gracilaria salicornia, Gracilaria cacaia, Corallopsis dichotoma, Corallopsis opuntia, Corallopsis salicornia, Sphaerococcus salicornia</i>
			14 Rumput Rantai / Cactus Algae / Watercress Algae / Prostrate Sea Cactus / Money Plant		<i>Halimeda opuntia</i>

No	Kelompok	Sub Kelompok	Jenis Pangan	Sub Jenis Pangan / Varian	Nama Latin
15			Rumput Laut Merah/Red Algae/ Crozier Weed		<i>Hypnea musciformis, Fucus musciformis</i>
16			Rumput Laut Merah/Red Algae/ Clawed Sea Moss		<i>Portieria homemannii</i>
17			Rumput Laut Coklat/Gulfiweed/Binder's Sargassum Weed		<i>Sargassum aquifolium, Fucus aquifolius, Sargassum crassifolium, Sargassum echinocarpum</i>
18			Rumput Laut Coklat/Gulfiweed/ Common Pacific Sargassum		<i>Sargassum duplicatum, Sargassum ilicifolium</i>
19			Rumput Laut Coklat/Gulfiweed/ <i>Reinbold Gracile Sargassum</i>		<i>Sargassum gracillimum</i>
20			Rumput Laut Coklat/Gulfiweed; White- Vein Sargassum		<i>Sargassum hystrix</i>
21			Rumput Laut Coklat/Gulfiweed		<i>Sargassum macrophyllum</i>
22			Rumput Laut Coklat/Japanese Wireweed/Japweed		<i>Sargassum muticum, Sargassum kjellmanianum</i>
23			Rumput Laut Coklat / Gulfiweed		<i>Sargassum obtusifolium</i>
24			Rumput Laut Coklat/Gulfiweed		<i>Sargassum polyacratium, Carpacanthus polyacratius</i>
25			Rumput Laut Coklat/Gulfiweed		<i>Sargassum polycystum, Sargassum bacciferum</i>
26			Rumput Laut Coklat/Brown Algae/ Gulfiweed		<i>Sargassum vulgare</i>
27			Ganggang Hijau/Alga Hijau/Selada Laut/Sea Lettuce/Green Laver		<i>Ulva lactuca</i>
28			Rumput Laut Kancing/Button Algae/Coil Caulerpa		<i>Caulerpa nummularia, Caulerpa peltata f. exigua, Caulerpa peltata var. nummularia, Caulerpa racemosa var. exigua, Caulerpa racemosa var. nummularia, Caulerpa stellata</i>
29			Rumput Laut Anggur Laut/Lat (Kep. Kei, Maluku)/Seagrapes/Green Caviar		<i>Caulerpa lentilifera</i>

No	Kelompok	Sub Kelompok	Jenis Pangan	Sub Jenis Pangan / Varian	Nama Latin
30			Rumput Laut Bulu Ayam / Green Feather Algae		<i>Caulerpa sertularioides</i> , <i>Fucus sertularioides</i> , <i>Fucus plummaris</i> , <i>Caulerpa plummaris</i> , <i>Caulerpa sertularioides f. typica</i> , <i>Corradoria plummaris</i>
31			Rumput Laut Alga Merah / Spinosum / Red Seaweeds Spinosum		<i>Eucheuma denticulatum</i> , <i>Eucheuma muricatum</i> , <i>Eucheuma spinosum</i> , <i>Grateloupia opposita</i> ,
32			Agar-Agar Karang (Indonesia) / Rumput Laut Janggut Dayung (Bangka) / Sango-Sango; Dongi-Dongi (Sulawesi) / Bulung Embulung (Jawa Bali) / Bulung Sangu (Bali) / Bulung Tombong Putih (Labuhanhaji, Lombok Atau Lotuotu Putih (Ambon) / <i>Gracilaria Seaweeds</i>		<i>Gracilariopsis longissima</i>
33			Rumput Laut Sango-Sango (Sulsel) / Ceylon Agar / Ceylon Moss / <i>Dichotomously Branched Gracilaria</i>		<i>Hydropuntia edulis</i> , <i>Gracilaria edulis</i>
34			Rumput Laut Kotoni / Seaweeds Cottoni / Elkhorn Sea Moss		<i>Kappaphycus divarezii</i> , <i>Eucheuma cottonii</i>
35			Rumput Laut; Agar-Agar / Striped Seaweeds / Saccol		<i>Kappaphycus striatus</i> , <i>Eucheuma striatum</i>
36			Rumput Laut Anggur Laut / Lawi-Lawi (Sulsel) / Bulung Boni (Bali) / Latoh (Pulau Jawa Dan Lombok) / Green Grape Algae / Sea Grapes; Green Caviar		<i>Caulerpa racemosa</i> , <i>Caulerpa clavifera</i> , <i>Caulerpa clavifera var. uvifera</i> , <i>Caulerpa obtusa</i> , <i>Caulerpa racemosa var. clavifera</i> , <i>Caulerpa racemosa var. disticha</i> , <i>Caulerpa racemosa var. uvifera</i> , <i>Caulerpa uvifera</i> , <i>Chauninia clavifera var. uvifera</i>

No	Kelompok	Sub Kelompok	Jenis Pangan	Sub Jenis Pangan / Varian	Nama Latin
		02. Mikroalga	1 <i>Spirulina</i>		<i>Spirulina</i> sp, <i>Spirulina maxima</i> , <i>Spirulina platensis</i>
			2 <i>Chlorella</i>		<i>Chlorella</i> sp, <i>Chlorella vulgaris</i> , <i>Chlorella pyrenoidosa</i> , <i>Chlorella</i> <i>ellipsoidea</i> , <i>Chlorella sorokiniana</i>
			3 <i>Dunaliella</i>		<i>Dunaliella</i> sp, <i>Dunaliella salina</i> , <i>Dunaliella bardawil</i> , <i>Dunaliella</i> <i>promolecta</i>
			4 <i>Tetraselmis</i>		<i>Tetraselmis</i> sp., <i>Tetraselmis maculata</i>
			5 <i>Star Jelly/Troll's Butter/ Spit of</i> <i>Moon/Fallen Star/Witch's Butter</i>		<i>Nostoc</i> sp., <i>Nostoc commune</i> , <i>Nostoc</i> <i>flagelliforme</i> , <i>Nematostoc</i> <i>rhizomorphoides</i> , <i>Nostoc ciniflorum</i> f. <i>flagelliforme</i> , <i>Nostoc commune</i> var. <i>flagelliforme</i> , <i>Nematostoc flagelliforme</i>
			6 <i>Nannochloropsis</i>		<i>Nannochloropsis</i> sp, <i>Nannochloropsis</i> <i>oceanica</i> , <i>Nannochloropsis gaditana</i> , <i>Nannochloropsis oculata</i> , <i>Nannochloropsis salina</i>
			7 <i>Chaetoceros</i>		<i>Chaetoceros</i> sp, <i>Chaetoceros</i> <i>calcitrans</i>
			8 <i>Nannochloris</i>		<i>Nannochloris</i> sp, <i>Nannochlorum</i> <i>eukaryotum</i> , <i>Nannochloris</i> <i>eucaryotium</i>

					<i>Psirogyra</i>	<i>Psirogyra</i>	<i>Psirogyra</i>	<i>Psirogyra</i>
				9			<i>negelecta;</i>	
				10	<i>Paulova</i>		<i>Paulova vidiris</i>	
				11	<i>Isochrysis</i>		<i>Isochrysis</i> sp; <i>Isochrysis galbana</i>	
				12	<i>Haematococcus</i>		<i>Haematococcus pluviialis</i>	
				13	<i>Hematococcus</i>		<i>Hematococcus pluviialis</i>	
				14	<i>Aphanizomenon</i>		<i>Aphanizomenon</i>	
				15	<i>Aphanizomenon</i>		<i>Aphanizomenon flos-aquae</i>	
				16	<i>Phaeodactylum</i>		<i>Phaeodactylum tricornutum</i>	
				17	<i>Cryptothecodinium</i>		<i>Cryptothecodinium cohnii</i>	
				18	<i>Chlamydomonas</i>		<i>Chlamydomonas rheinhardtii;</i> <i>Chlamydomonas cloroplast;</i>	
				19	<i>Euglena</i>		<i>Euglena gracilis</i>	
				20	<i>Skeletonema</i>		<i>Skeletonema costatum</i>	
				21	<i>Monochrysis</i>		<i>Monochrysis lutheri</i>	
				22	<i>Nitzschia</i>		<i>Nitzschia frustulum</i>	
				23	<i>Anabaena</i>		<i>Anabaena cylindrica</i>	
				24	<i>Chlamydomonas</i>		<i>Chlamydomonas rheinhardtii</i>	
				25	<i>Cylindrotheca</i>		<i>Cylindrotheca</i> sp; <i>Cylindrotheca Closterium;</i> <i>Cylindrotheca fusiformis;</i>	
				26	<i>Prymnesium</i>		<i>Prymnesium parvum</i>	
				27	<i>Porphyridium</i>		<i>Porphyridium cruentum</i>	
				28	<i>Scenedesmus</i>		<i>Scenedesmus obliquus</i>	
				29	<i>Scenedesmus</i>		<i>Scenedesmus almeriensis</i>	
				30	<i>Synechococcus</i>		<i>Synechococcus</i> sp	
				31	<i>Schizochytrium</i>		<i>Schizochytrium mangrove</i>	
				32	<i>Soelastrella</i>		<i>Soelastrella striolata</i>	

KEPALA BADAN PANGAN NASIONAL
REPUBLIK INDONESIA,



ARIEF PRASETYO ADI

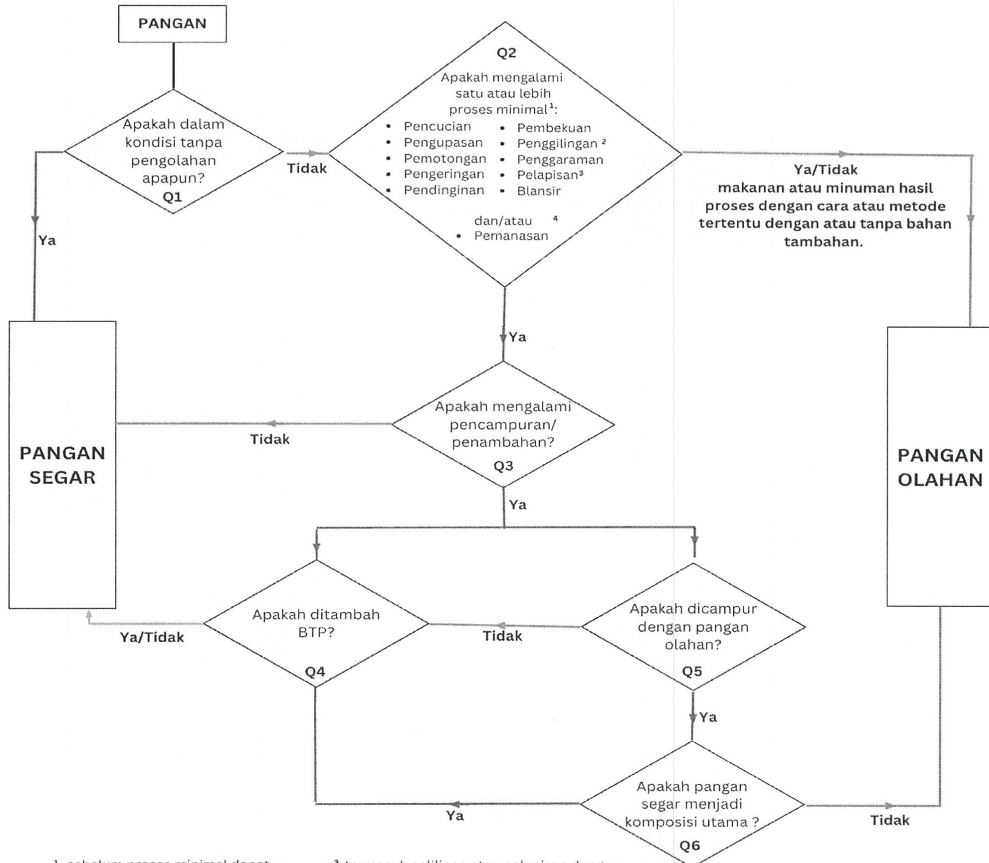


LAMPIRAN 2



LAMPIRAN II
KEPUTUSAN KEPALA BADAN PANGAN NASIONAL
REPUBLIK INDONESIA
NOMOR 337/PK.02.01/K/8/2023
TENTANG
PEDOMAN KLASIFIKASI PANGAN SEGAR

Pohon Keputusan



¹ sebelum proses minimal dapat dilakukan proses lain seperti fermentasi enzimatik (pemeraman)

² Penggilingan sederhana untuk tujuan mengurangi ukuran partikel, tidak termasuk tepung atau pati

³ termasuk pelilinan atau pelapisan dengan senyawa lain seperti glukosa dan lain-lain yang tidak merubah bentuk dari bentuk pangan segar

⁴ ditujukan untuk membunuh mikroba, mengurangi kadar air, menghentikan reaksi enzimatik, dan mengurangi laju respirasi, namun tidak mengalami perubahan bentuk

KEPALA BADAN PANGAN NASIONAL
REPUBLIK INDONESIA,



ARIEF PRASETYO ADI

**DIREKTORAT PERUMUSAN STANDAR KEAMANAN DAN MUTU PANGAN
DEPUTI BIDANG PENGANEKARAGAMAN KONSUMSI DAN KEAMANAN PANGAN**

2023

**Website : <https://badanpangan.go.id>
Email : dit.standar@badanpangan.go.id**